

*M. Simcks,
Seal.*

No. 95590.

Patented Oct. 5. 1869.

Fig. 1.

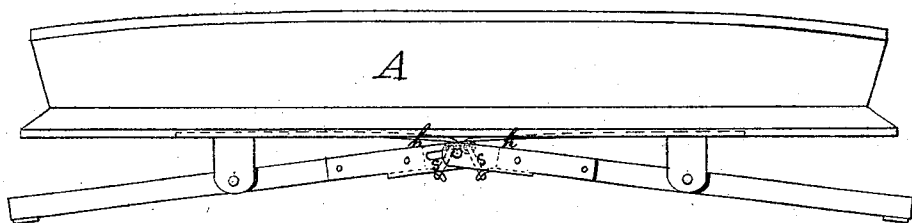
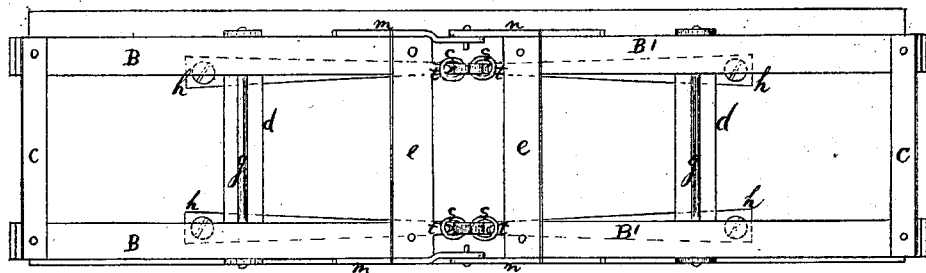


Fig. 2.



Witnesses

H. N. Miller

John A. Ellis

Inventor

M. Simcks

Per.

T. H. Alexander

Atty

United States Patent Office.

MELVIN JINCKS, OF WALLACE, NEW YORK.

Letters Patent No. 95,590, dated October 5, 1869.

IMPROVED WAGON-SEAT.

The Schedule referred to in these Letters Patent and making part of the same.

To all whom it may concern:

Be it known that I, MELVIN JINCKS, of Wallace, in the county of Steuben, and State of New York, have invented certain new and useful Improvements in Carriage-Seats; and I do hereby declare that the following is a full, clear, and exact description thereof, reference being had to the accompanying drawings, and to the letters of reference marked thereon, which form a part of this specification, in which—

Figure 1 represents a side elevation of a carriage-seat with spring-attachment.

Figure 2 is a plan view of the seat and attachment, when reversed.

The nature of my invention consists in attaching springs to the bottom of a carriage-seat, and operating the same in the manner specified.

A represents a carriage-seat.

B B' designate two frames, pivoted together at their inner end, by means of metal plates, constructed as follows:

Plates *m*, which are fastened to the outer edges of frame B, have a slot in them near their inner end, and plates *n* are penetrated by a pivot which enters the above-mentioned slot.

d d represent two metal plates firmly secured to the bottom of seat A, the said plates being bent upward at their end for the purpose hereinafter described.

The frames B B' are strengthened at their respective ends by plates *c c* and *e e*, and pivoted near their centre to the projecting end of plates *d d* by means of rods *g g*.

h h h h represent four metal springs secured to the bottom of seat A, two being placed near each of the

opposite edges of said bottom, and kept in place by a screw at their outer ends, and by plates *d*, which overlap said springs.

The inner ends of springs *h h* are hooked, for the purpose of holding one end of link *s*, the other end of said link being made to pass over a hook, *t*, projecting from the plates *e e*.

It will be observed that when there is no weight on seat A, the inner ends of frames B B' will be drawn down by the action of the springs *h h h h*, until they rest on said springs, but when a weight is placed on A, the frames B B' will be thrown nearly in a horizontal position, and play on their respective pivots, and thus adapt themselves to the jolting of the vehicle.

Having thus described my invention,

What I claim, and desire to secure by Letters Patent, is—

1. The hooked plates *e e*, in combination with springs *h h*, when said plates and springs are connected by means of metal links *s s*, and each part constructed and arranged to operate in the manner and for the purpose described.

2. The seat A, in combination with metal plates *e e*, frames B B', springs *h h*, metal links *s s*, and slotted plates *n n*, when all are constructed and arranged as and for the purpose set forth.

In testimony that I claim the foregoing as my own, I affix my signature, in presence of two witnesses.

MELVIN JINCKS.

Witnesses:

C. R. KERN,
JACOB J. GILDER.