



(19) **United States**

(12) **Patent Application Publication**  
**Bernstein et al.**

(10) **Pub. No.: US 2016/0294740 A1**

(43) **Pub. Date: Oct. 6, 2016**

(54) **E-MAIL INTEGRATED INSTANT MESSAGING**

No. 10/311,259, filed on Dec. 11, 2002, now Pat. No. 8,001,190, filed as application No. PCT/US01/20381 on Jun. 25, 2001.

(71) Applicant: **Facebook, Inc.**, Menlo Park, CA (US)

(60) Provisional application No. 60/214,157, filed on Jun. 26, 2000.

(72) Inventors: **Keith Bernstein**, San Francisco, CA (US); **Alan Chung**, San Francisco, CA (US)

**Publication Classification**

(21) Appl. No.: **15/143,111**

(51) **Int. Cl.**  
**H04L 12/58** (2006.01)

(22) Filed: **Apr. 29, 2016**

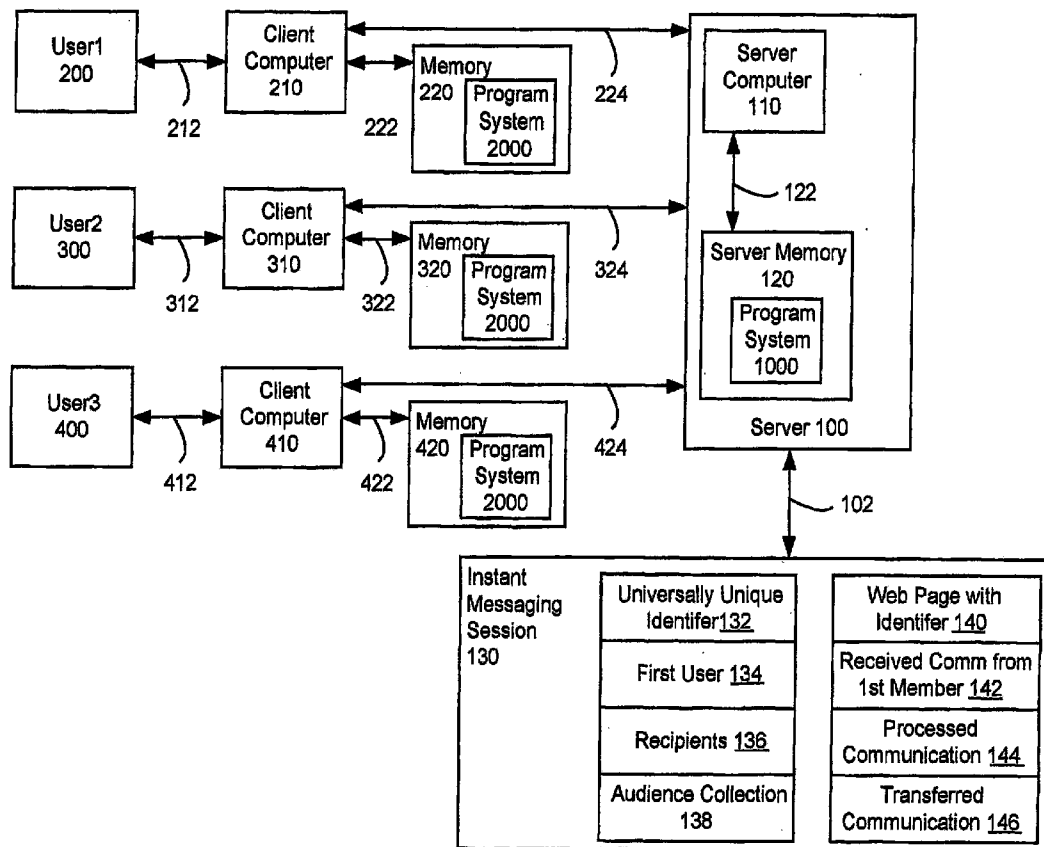
(52) **U.S. Cl.**  
CPC ..... **H04L 51/04** (2013.01)

(57) **ABSTRACT**

**Related U.S. Application Data**

A system and method supporting instant messaging which removes many of the problems and barriers to the use of instant messaging through the use of universally unique identifiers to web pages for instant messaging sessions, with recipients invited to the instant messaging session via email.

(63) Continuation of application No. 13/620,985, filed on Sep. 15, 2012, now Pat. No. 9,363,213, which is a continuation of application No. 13/175,410, filed on Jul. 1, 2011, which is a continuation of application



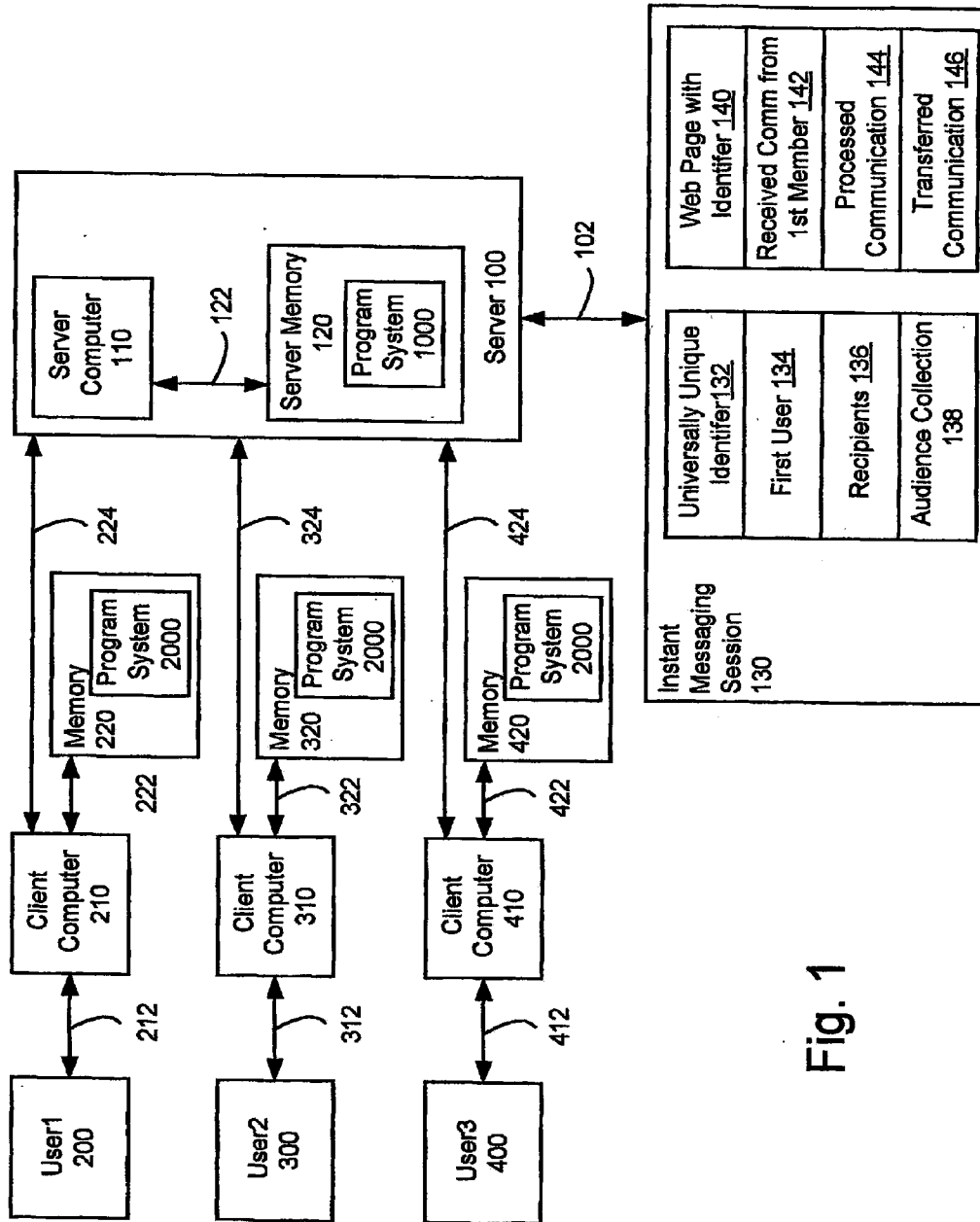


Fig. 1

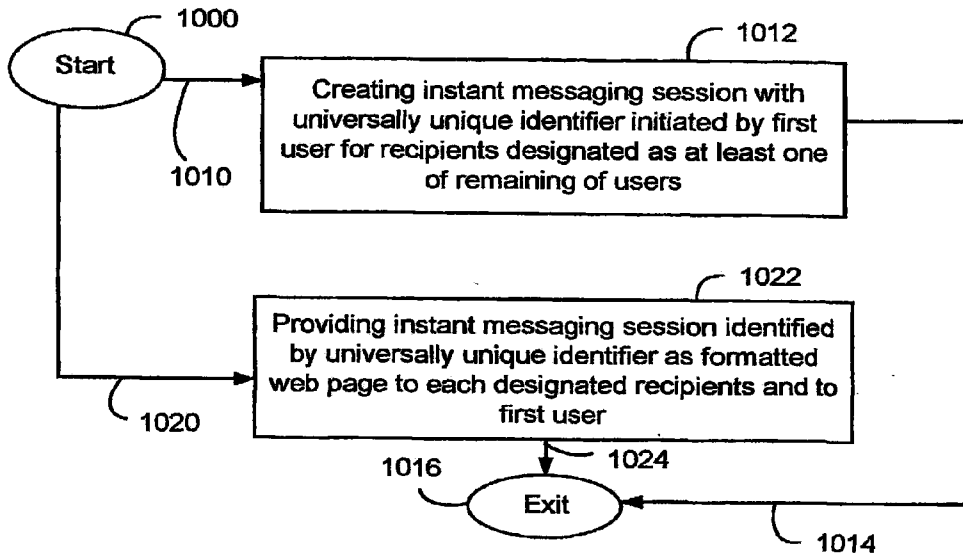


Fig. 2A

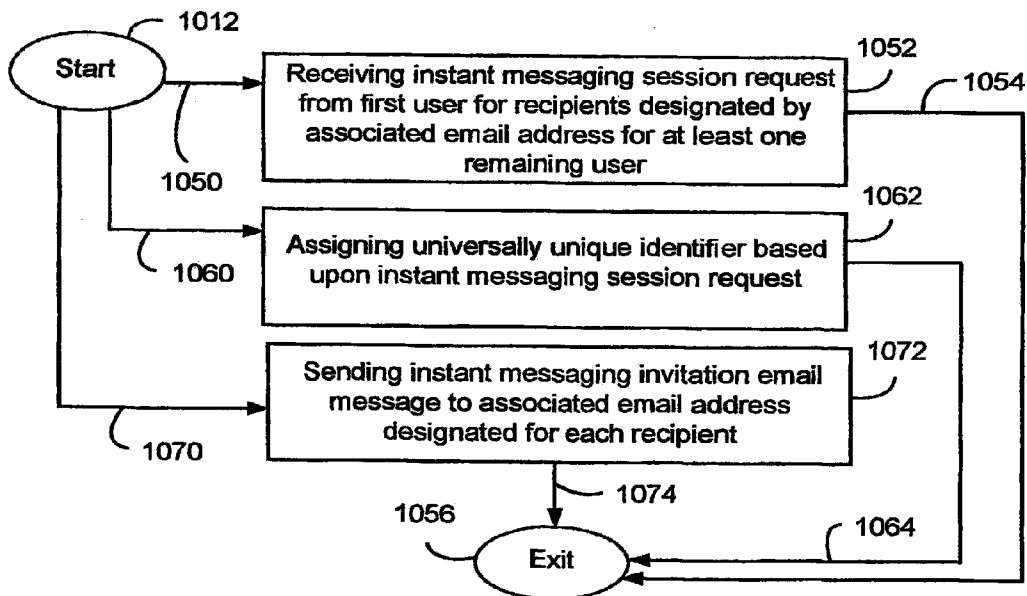


Fig. 2B

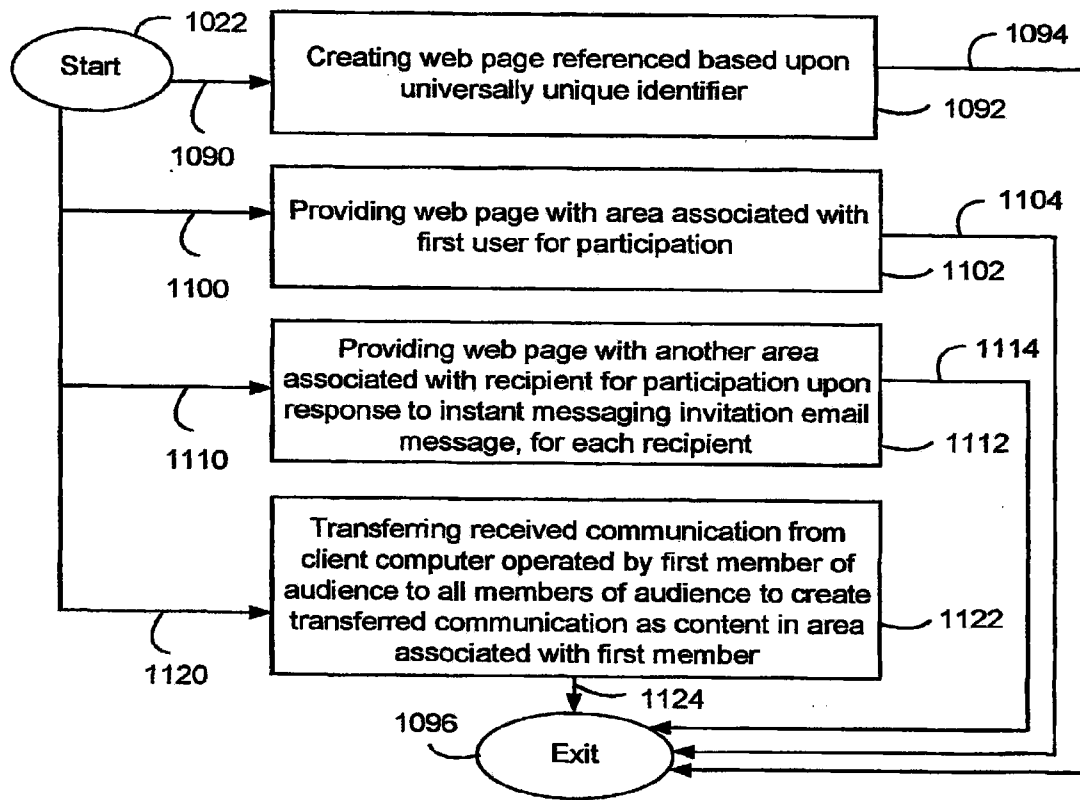


Fig. 3

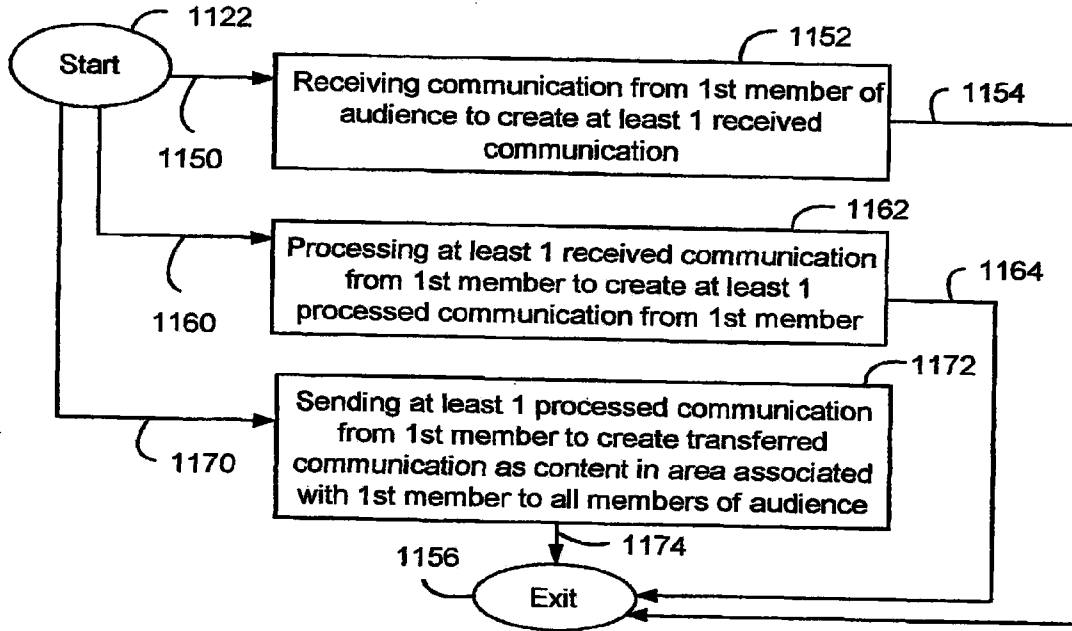


Fig. 4A

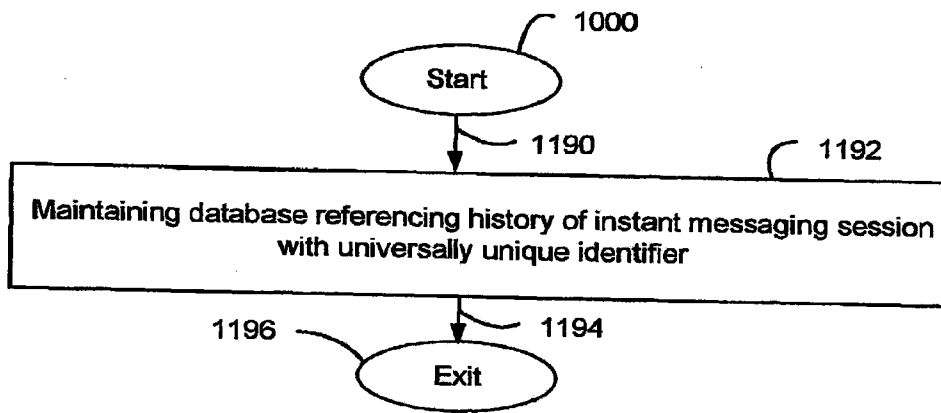


Fig. 4B

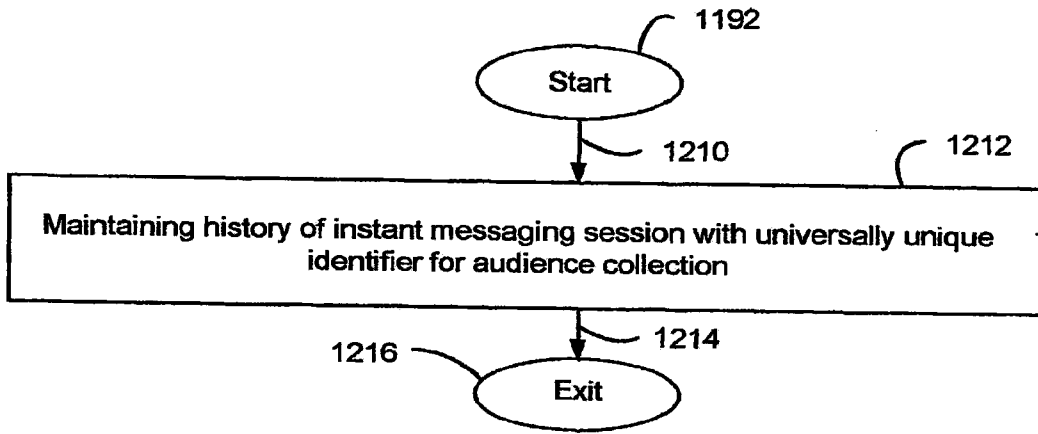


Fig. 5A

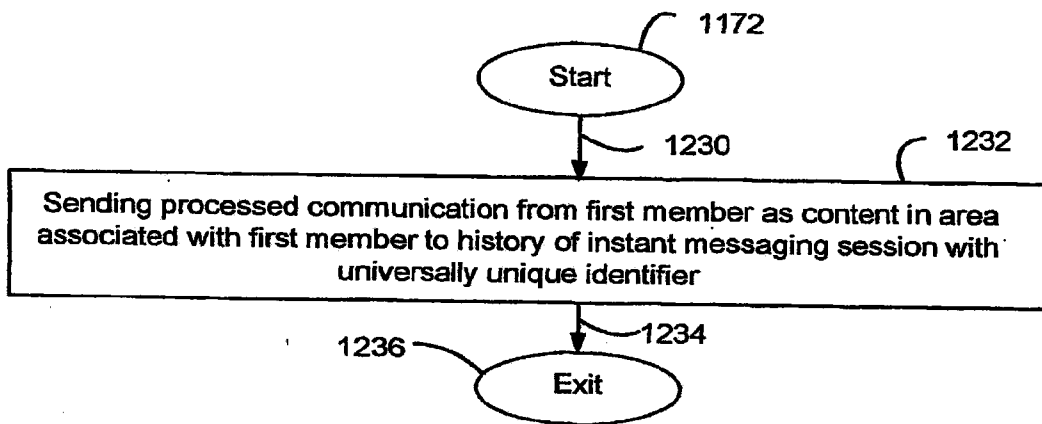


Fig. 5B

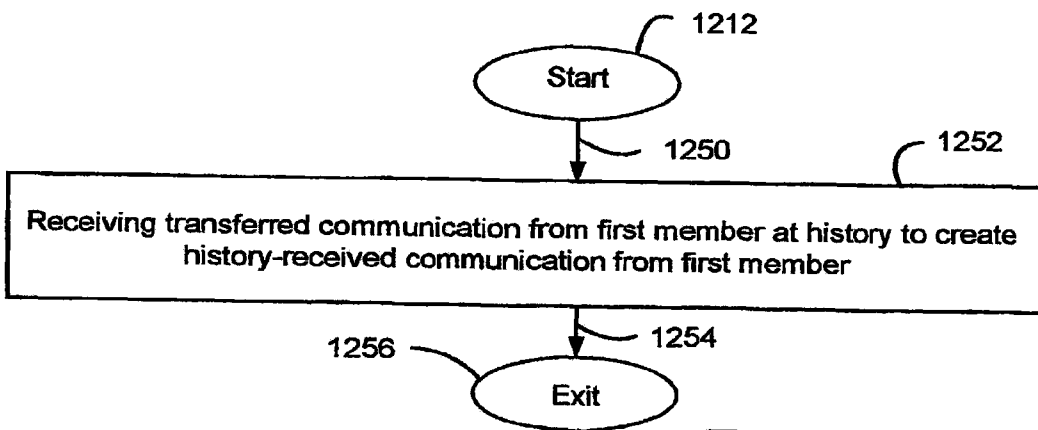


Fig. 5C

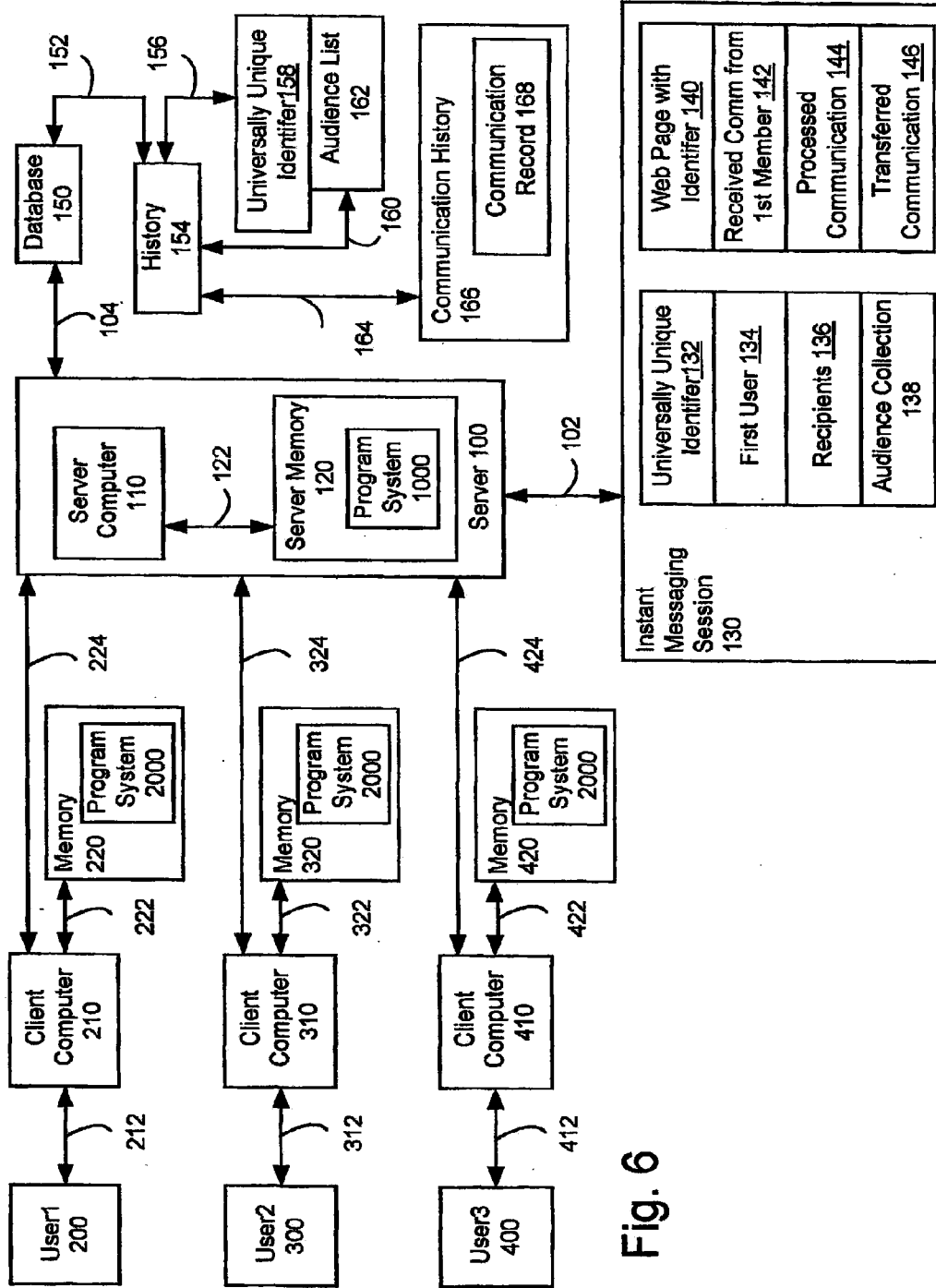


Fig. 6

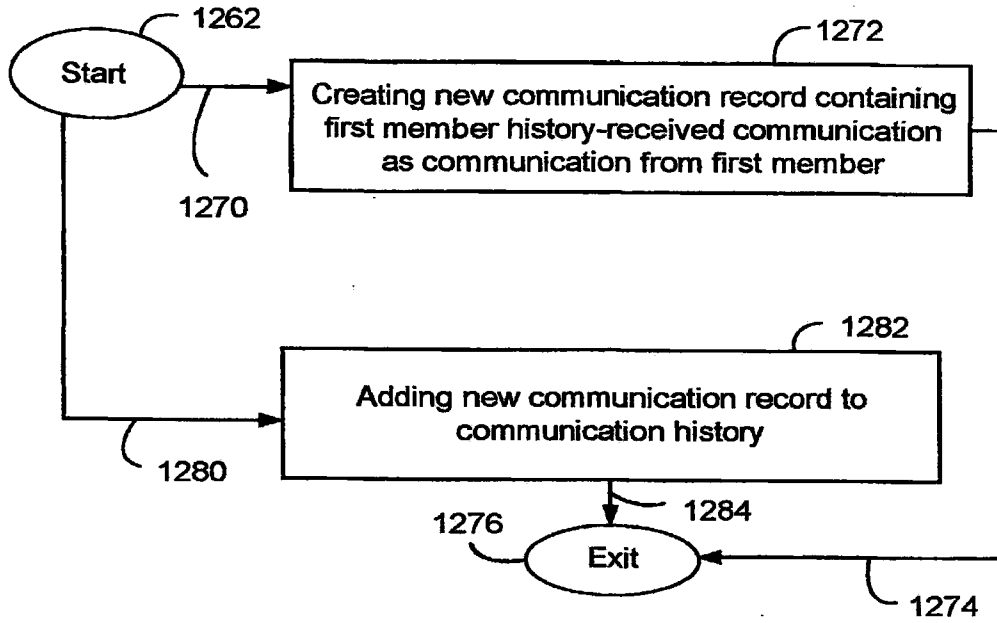


Fig. 7A

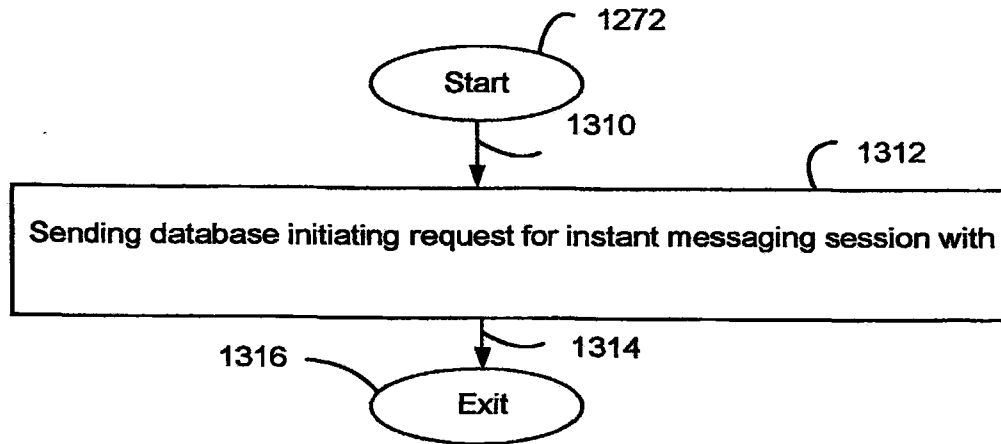


Fig. 7B



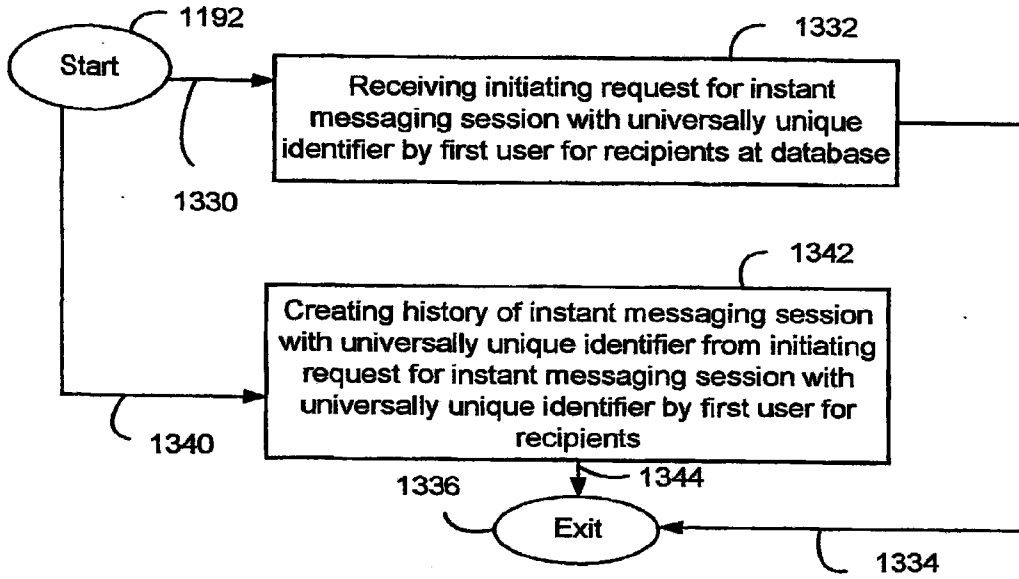


Fig. 8A

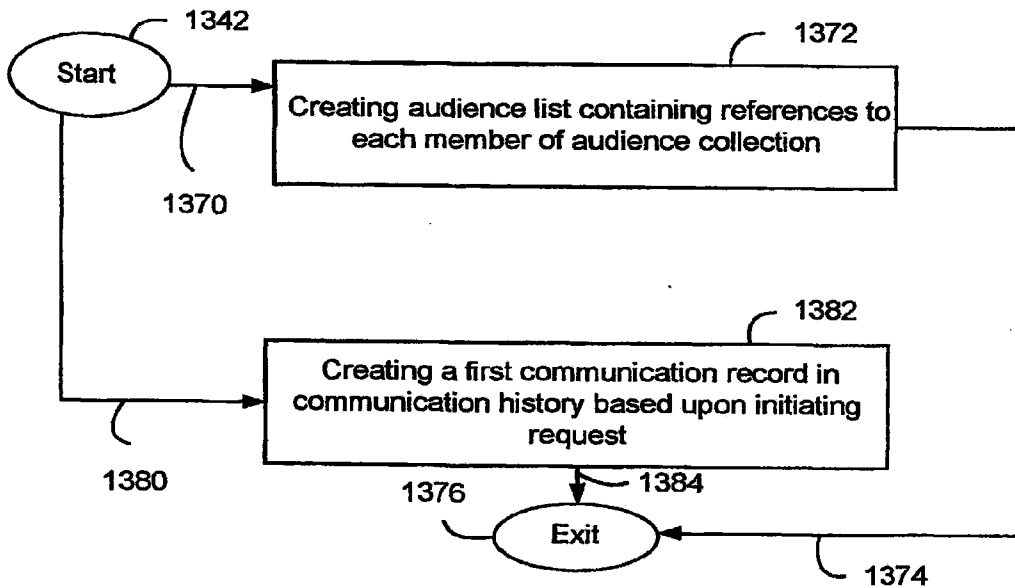


Fig. 8B

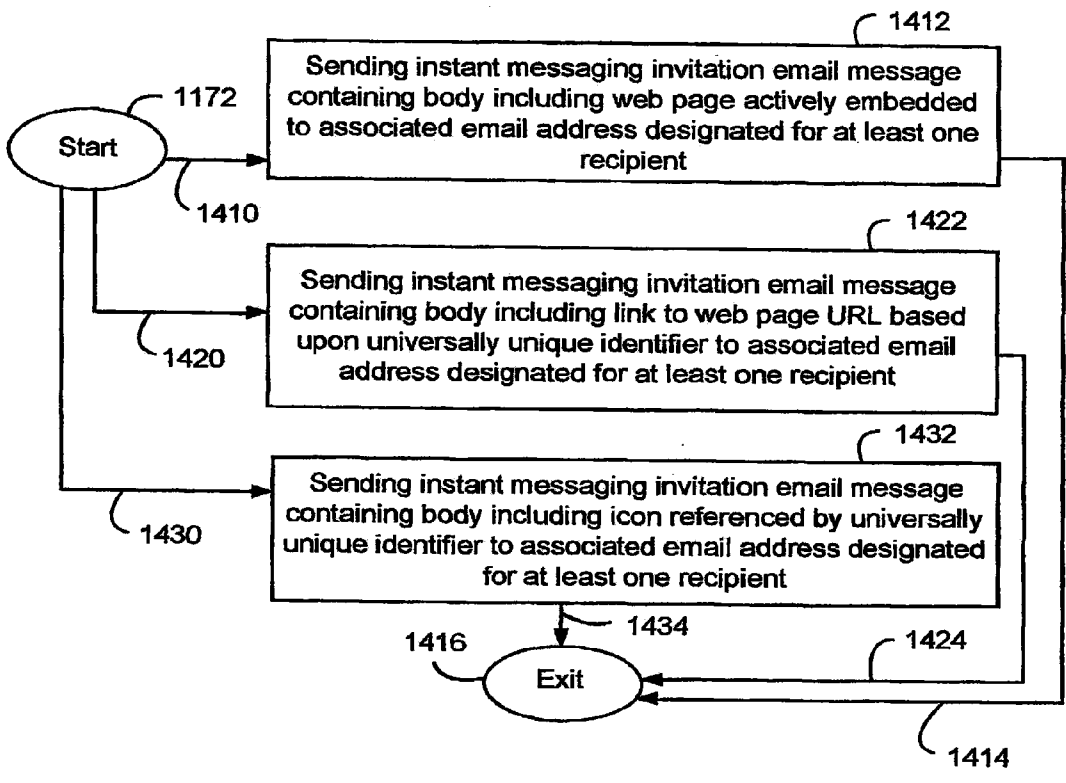
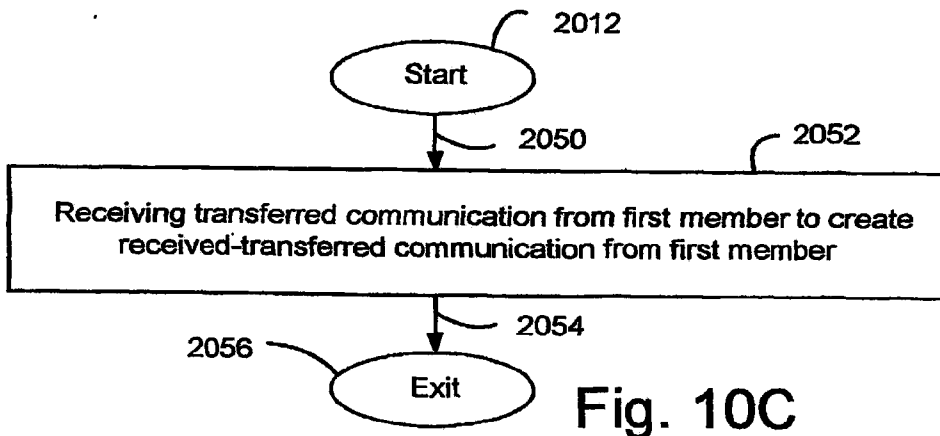
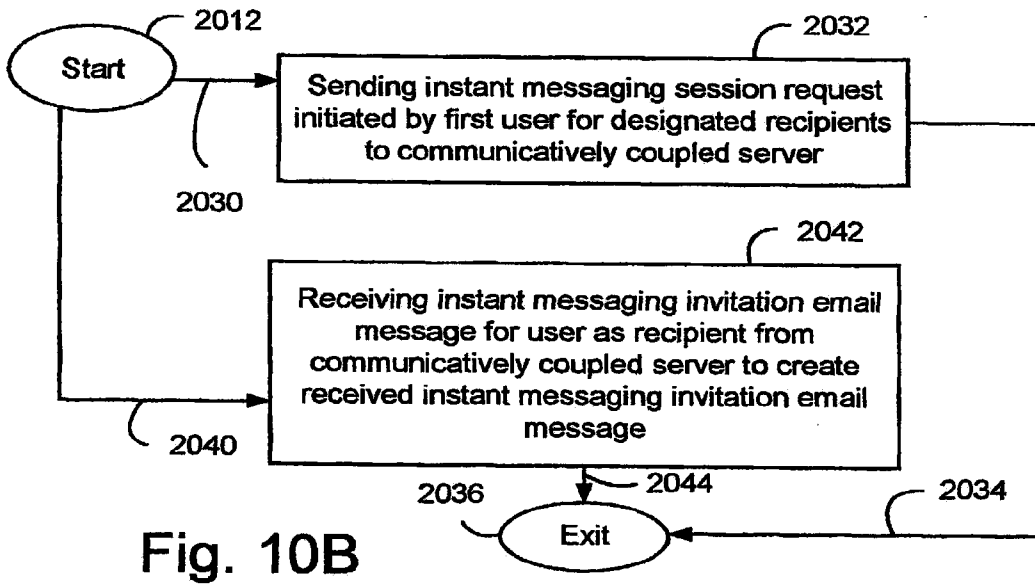
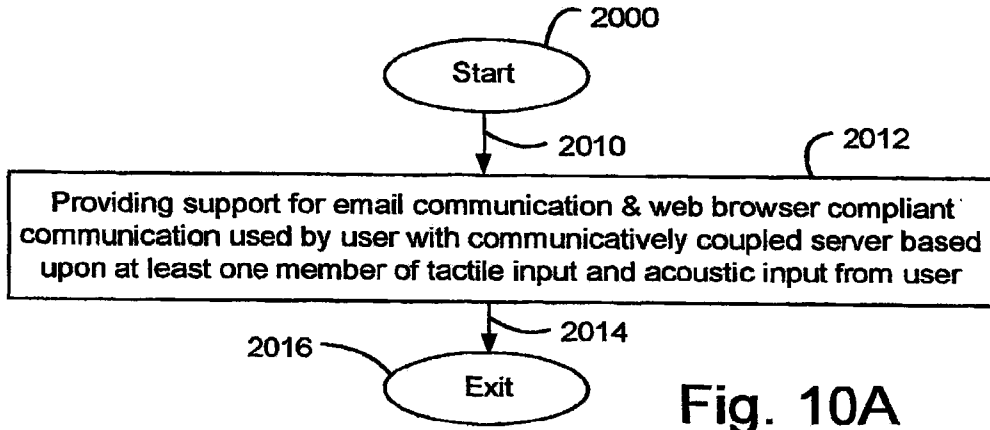


Fig. 9



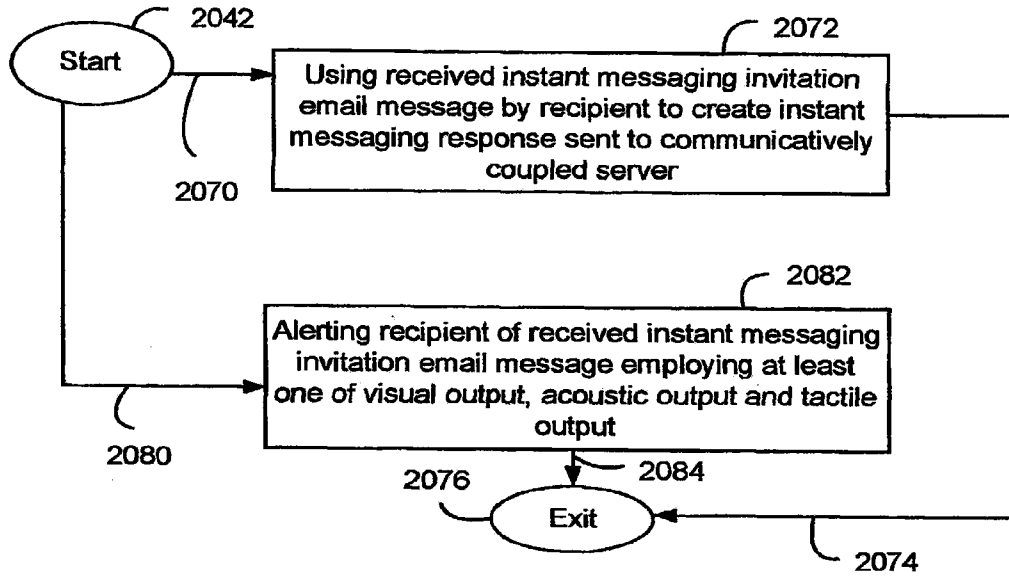


Fig. 11A

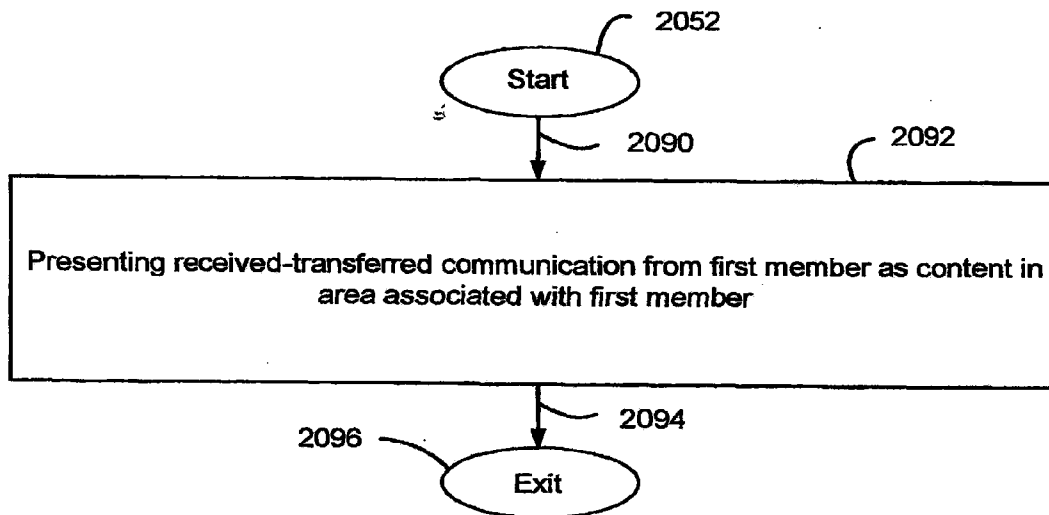


Fig. 11B

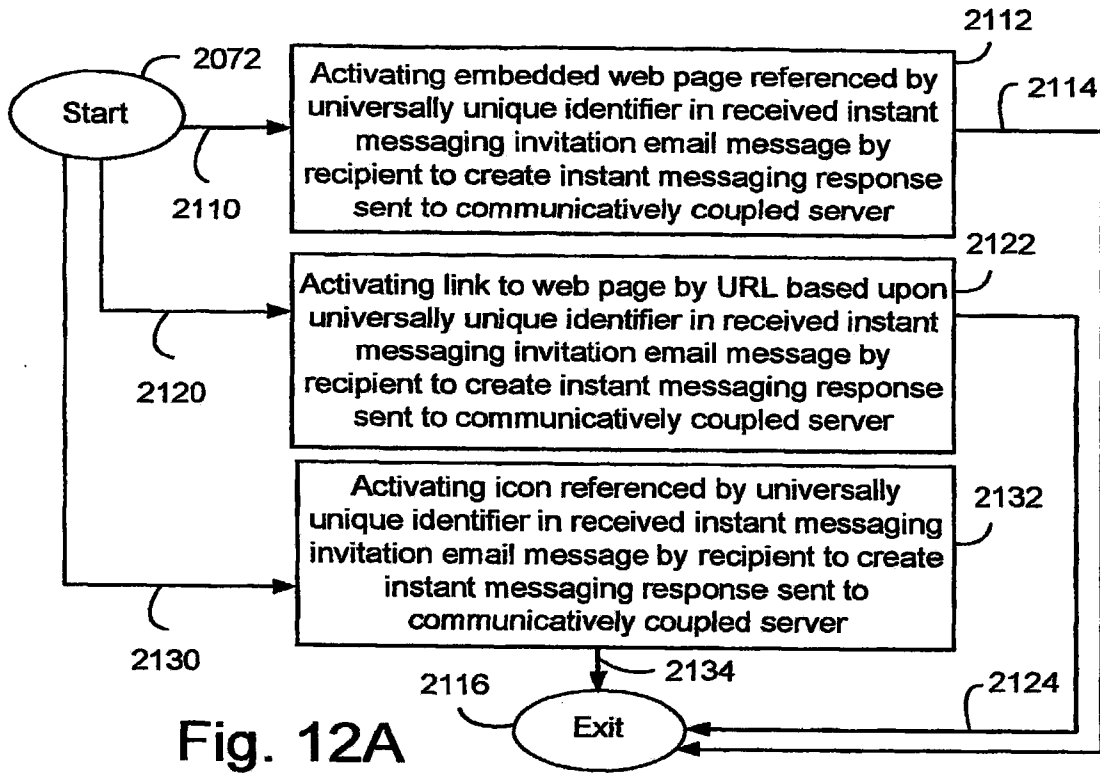


Fig. 12A

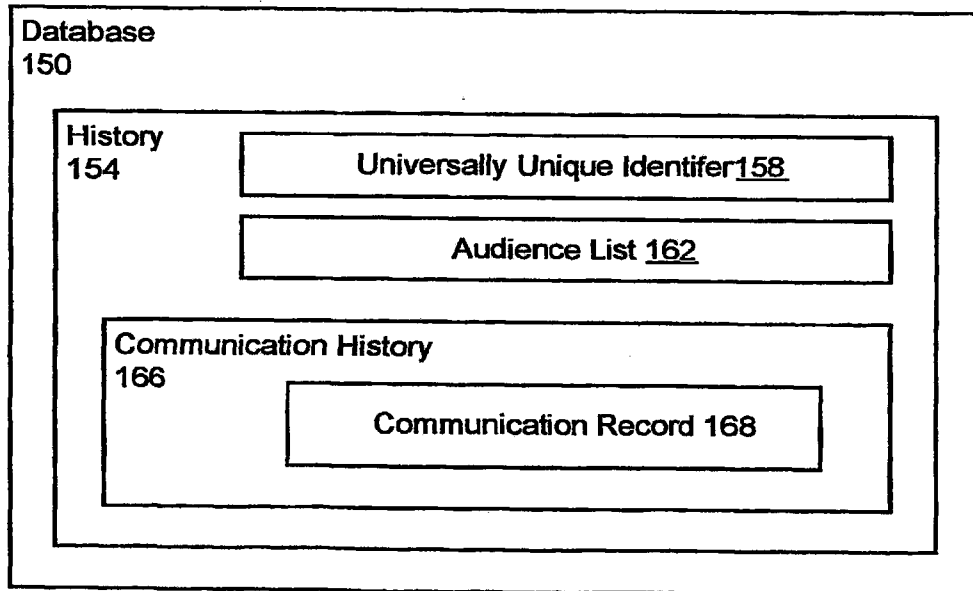


Fig. 12B

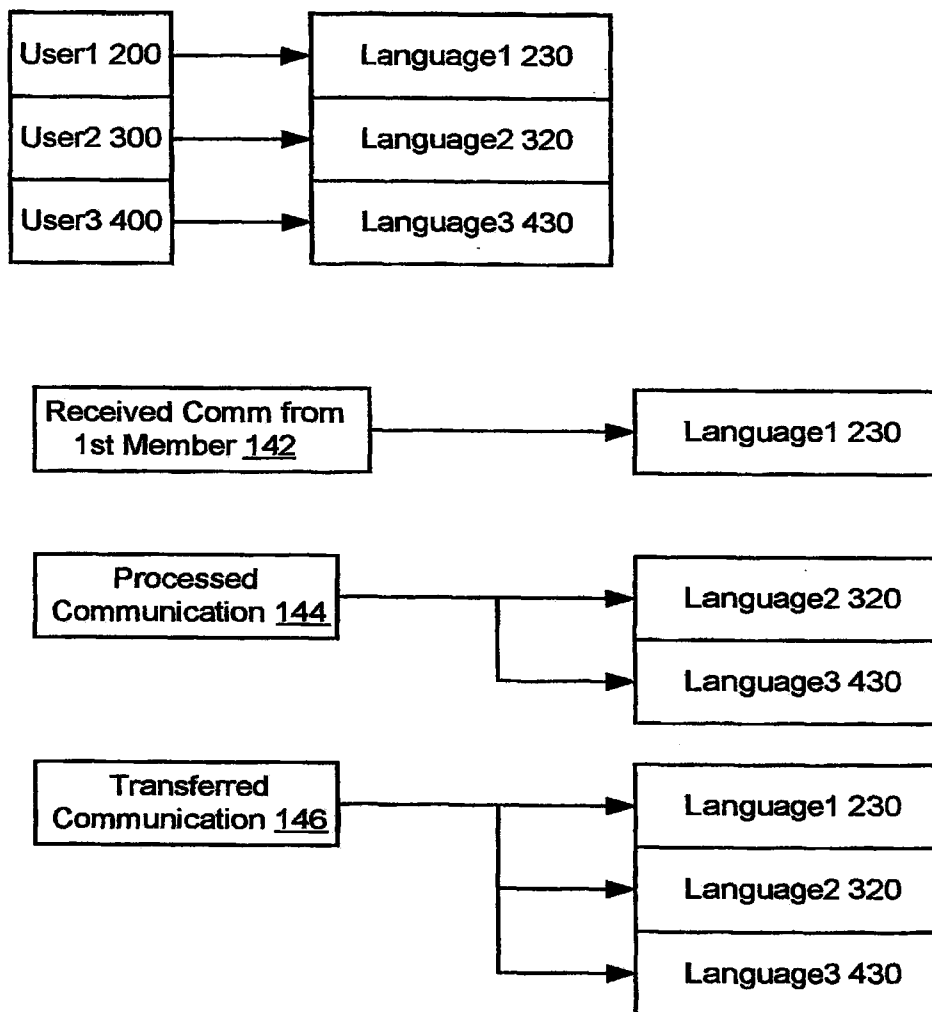


Fig. 13

**E-MAIL INTEGRATED INSTANT MESSAGING**

**CROSS-REFERENCE TO RELATED APPLICATIONS**

[0001] The present application is a continuation of U.S. application Ser. No. 13/620,985 filed Sep. 15, 2012, which is a continuation of U.S. application Ser. No. 13/175,410 filed Jul. 1, 2011, which is a continuation of U.S. application Ser. No. 10/311,259 filed Dec. 11, 2002, which is now issued as U.S. Pat. No. 8,001,190, which is a 371 national stage application of international application number PCT/US01/20381 filed Jun. 25, 2001, which claims the benefit of and priority to U.S. provisional application No. 60/214,157 filed Jun. 26, 2000. Each of the aforementioned patent(s) and application(s) are hereby incorporated by reference in their entirety.

**TECHNICAL FIELD**

[0002] This invention relates to initiation of an Instant Messaging (IM) session between two or more parties and communication using a “standard/standalone” Instant Messaging paradigm with or without email integration.

**BACKGROUND ART**

[0003] There are at least four major problems that are common in today’s Instant Messaging (IM) systems including: “screen name” namespace problems, privacy problems, lack of acceptable and automated Instant Messaging message archiving, and service provider compatibility/software deliverability problems.

[0004] The namespace problem can be broken down into three sub-problems, as follows:

[0005] “Screen names” are not unique across IM providers. In today’s Instant Messaging software, each Instant Messaging service provider maintains a separate and proprietary “screen name” namespace. This leads to users of one Instant Messaging service not being able to freely communicate with the users of a different Instant Messaging service provider because names in each namespace are not universal, so, for example, the user “Johril” in AOL’s Instant Messenger (AIM) might refer to John Smith, while “John P in Yahoo’s Messenger might refer to John Jones.

[0006] Obtaining a desired name is difficult, and will only get more difficult. The namespaces available within each Instant Messaging provider are extremely crowded. For example, when signing up with the largest of the Instant Messaging providers, AOL’s Instant Messenger (AIM) service, a typical user would rarely succeed with their first choice for a screen name because there are over 90 million names already in use. In the case of AOL, this problem will only get worse as over 3 million new users sign up for AIM each month.

[0007] “Screen names” frequently have little or no connection to a person’s “real” name. Most Instant Messaging screen names are names like “doglover3”, “corvette33”, etc., since, as described above, names like “John Smith” have all been taken. Therefore users end up with screen names which are hard for others to remember. This problem is of particular concern in the business world where universal and recognizable user names are essential for conducting business.

[0008] The privacy problem can be seen as follows. In the Instant Messaging environments available by current Instant Messaging providers a particular user’s presence online can easily, or even automatically, be detected by others. When a user begins an Instant Messaging session using one of these Instant Messaging providers, all other users who are interested in this user are notified that the he just went “online”. Some Instant Messaging providers do provide some protection against this “presence detection”. They may allow users to set an option to either let “no one” know that they are online, or to block certain people from knowing they are online. Unfortunately, these type of features are cumbersome to use since they are not automatic and force users to constantly manage who can “see” them and who can’t.

[0009] The Instant Messaging messaging archiving problem can be seen as follows. Some currently available Instant Messaging client software allows users to save transcripts of an Instant Messaging session as a file on their computer disk. But the client software does not allow them to file these sessions away, title them, etc., as they would with email, and the feature is cumbersome enough that most users either don’t know it exists, or simply don’t use it. This gives Instant Messaging a disadvantage when compared to email because it does not allow the user to maintain an automatic archive of what was discussed in the Instant Messaging session.

[0010] There are several problems associated with Instant Messaging service provider compatibility and software delivery. Today, Instant Messaging service providers require users download a particular piece of software to execute on their computer. This type of Instant Messaging software causes at least three major problems.

[0011] Lack of interoperability causes a significant problem. Each Instant Messaging service provider only supports its own Instant Messaging protocol and client software. Clients from one Instant Messaging service provider, using that service provider’s Instant Messaging software can typically only communicate with other people who use the same service provider and software. A person cannot arbitrarily send an Instant Message to another person, unless that other person uses the same Instant Messaging service provider and software that they do. For example, “Joe” uses AOL’s Instant Messenger, and “Jane” uses Yahoo’s Messenger. Even if Joe and Jane know each other’s screen names, they cannot communicate with each other since they are using different Instant Messaging service providers.

[0012] Lack of platform independence is another problem. Today’s Instant Messaging service providers and software typically will only execute on a limited number of hardware platforms, so users on non-supported platforms will not be able to communicate with users on supported platforms.

[0013] The inability to work through network “firewalls” causes additional problems. The current Instant Messaging service providers and software offerings will typically not work through “firewalls”. Since most business enterprises have firewalls in place, these programs preclude users inside the organization from communicating with users outside of the organization. Additionally, as home networks become more prevalent, the use of firewalls will become more common and the significance of this problem will increase.

**SUMMARY OF THE INVENTION**

[0014] Certain embodiments of the present invention are directed to a system supporting the initiation of an Instant

Messaging (IM) session between two or more parties through the use of email programs and standard web browsers. Additionally, it allows users to communicate using a “standard/standalone” Instant Messaging paradigm (i.e. without email integration) which affords users the features of today’s popular Instant Messaging services, but also provides at least the additional benefits listed in the summary.

**[0015]** Regarding the namespace problem, users are not required to use proprietary “screen names”. Instead, the inventive system allows the parties to use their email address as their “screen name”. Email addresses have the advantages that they are much more pervasive and established than typical Instant Messaging “screen names”, and valid email addresses are guaranteed to be universally unique names.

**[0016]** The present invention details a process whereby a computer user may send an “IM Enhanced” or “Live” email to another person, using a standard email program, by knowing only the recipient’s email address.

**[0017]** Regarding the privacy problem, when an Instant Messaging session is initiated via email, strict privacy rules are enforced in a non-intrusive manner; one user cannot “blindly” initiate a messaging session with another user, unless the second user accepts the Instant Messaging invitation. Furthermore, the initial chat request is not delivered via an Instant Message, rather, it is delivered in an email. Upon receipt of the email invitation, the recipient initiates an Instant Messaging conversation with the sender (who’s acceptance is implicit since the sender initiated the Instant Messaging request). When an Instant Messaging session is initiated via the “standalone” Instant Messaging web page, the user is able to control presence detection in the same sorts of ways as most commonly available Instant Messaging software allows.

**[0018]** The present invention also details the process whereby users may indicate that presence detection is allowed only to certain individuals simply by sending those individuals an email/IM invitation. This email becomes the implicit “permission” for the recipient to converse with the sender, so no other action is required on the part of the sender. This provides a very dynamic and powerful means of granting “permission” to message, and the permissions may even be email message specific. This means that if Joe sends Jane an IM-enhanced email, Jane would be able to communicate to Joe through that email, but if Jane used the standalone Instant Messaging service, she may not be able to detect Joe’s presence, assuming Joe has “total privacy” selected.

**[0019]** The sender is not able to initiate the Instant Messaging conversation in any way other than through an email. This prevents users from getting Instant Messaging “spam”. If the recipient accepts the Instant Messaging invitation included in the email, they can begin a conversation with the sender (who is assumed to have implicitly accepted IMs from the recipient). Since these Instant Messaging conversations are initiated via email, the spam problem is also addressed by leveraging all of the protections already in place for protecting users against email spam, this includes existing legislation, filtering software, etc.

**[0020]** Regarding the problem of Instant Messaging message archiving, users may choose to permanently save Instant Messaging sessions in much the same way that they save email. The Instant Messaging session might even be saved as part of the email. This allows instant Messaging

archives to be referred back to in the future. Additionally, if there was an Instant Messaging session as a result of an email, that Instant Messaging session will be automatically saved in conjunction with the email, so that anytime in the future the user chooses to read that particular piece of email, they will also see the associated messaging.

**[0021]** Upon receiving such an email, the recipient will be able to read the email “body” as they always have, and below the email body will be an area in which to participate in an Instant Messaging conversation with the sender.

**[0022]** As the Instant Messaging session proceeds, it is constantly being saved on the server computer, which provides the Instant Messaging support. This allows users to file away emails as always, and at any future time, when they view the email, the full transcript of the Instant Messaging session will also appear. This allows users to both maintain conversations about the email together with the email, as well as to maintain an automatic archive of their Instant Messaging session (users would, of course, be able to disable this feature).

**[0023]** Regarding Instant Messaging service provider compatibility and software delivery problems, no explicit signup or software is needed. Sender and recipient need not be signed up with a common Instant Messaging service provider, or any service provider at all in order to message each other. Users may “message” each other without the need for explicit client software downloads. Messaging is performed with standard DHTML within an email’s window [though the Instant Messaging part of this invention can also be utilized in an “IM only” mode, without the use of email].

**[0024]** This “IM area” is rendered within the email message, using only generally available browser technologies, such as DHTML. No other software is required for the user to download, and no “plugins” are required. This allows any user with a popular browser to immediately, and seamlessly, participate in an Instant Messaging session.

**[0025]** The whole Instant Messaging session takes place using only the publicly-defined Internet protocol known as HTTP allowing Instant Messaging conversations to take place across firewalls. The present invention also details the process whereby a computer user may send or receive “standard” Instant Messages, from a web-based Instant Messaging web page/application. The implementation of this “standalone” web page uses the same software “engine” as the software described above, which allows users to Instant Messaging each other within their emails. Though there are many benefits to the email/Im solution, a standalone solution is required as well, since the sender needs a way to communicate with the recipient once the recipient chooses to initiate an Instant Messaging session. Additionally, users often choose to communicate only via Instant Messages, and not use email. It is in the standalone incarnation of this software where the privacy and presence-hiding and http presence-detection features of this software shine.

**[0026]** These and other advantages of the present invention will become apparent upon reading the following detailed descriptions and studying the various figures of the drawings.

#### BRIEF DESCRIPTION OF THE DRAWINGS

**[0027]** FIG. 1 depicts a system comprising a server 100 communicatively coupled to associated client computers used by users supporting email communications and web



browser compliant communications to provide instant messaging between at least two of the users;

[0028] FIG. 2A depicts a detail flowchart of server program system 1000 of FIG. 1 for supporting instant messaging between at least two of the users;

[0029] FIG. 2B depicts a detail flowchart of operation 1012 of FIG. 2A for creating the instant messaging session;

[0030] FIG. 3 depicts a detail flowchart of operation 1022 of FIG. 1 for providing the instant messaging session;

[0031] FIG. 4A depicts a detail flowchart of operation 1122 of FIG. 3 for transferring the at least one received communication from the first member;

[0032] FIG. 4B depicts a detail flowchart of server program system 1000 of FIG. 1 for supporting instant messaging between at least two users;

[0033] FIG. 5A depicts a detail flowchart of operation 1192 of FIG. 4B for maintaining the database referencing the history;

[0034] FIG. 5B depicts a detail flowchart of operation 1172 of FIG. 4A for sending the at least one processed communication from the first member;

[0035] FIG. 5C depicts a detail flowchart of operation 1212 of FIG. 5A for maintaining the history;

[0036] FIG. 6 is a refinement of FIG. 1 showing server 100 coupled 102 to instant messaging session 130 and further coupled 104 to database 150;

[0037] FIG. 7A depicts a detail flowchart of operation 1262 of FIG. 5C for maintaining the communication history;

[0038] FIG. 7B depicts a detail flowchart of operation 1272 of FIG. 7A for creating the instant messaging session with the universally unique identifier;

[0039] FIG. 8A depicts a detail flowchart of operation 1192 of FIG. 4B for maintaining the database;

[0040] FIG. 8B depicts a detail flowchart of operation 1342 of FIG. 8A for creating the history;

[0041] FIG. 9 depicts a detail flowchart of operation 1172 of FIG. 4A for sending the instant messaging invitation email message to the associated email address designated for each of the recipients;

[0042] FIG. 10A depicts a detail flowchart of client program system 2000 of FIGS. 1 and 6 for controlling the associated client computer based upon the use by the user and the communicatively coupled server 100;

[0043] FIG. 10B depicts a detail flowchart of operation 2012 of FIG. 10A for support of email and web browser compliant communication;

[0044] FIG. 10C depicts a detail flowchart of operation 2012 of FIG. 10A for providing support for email communication and for web browser compliant communication;

[0045] FIG. 11A depicts a detail flowchart of operation 2042 of FIG. 10B for receiving the instant messaging invitation email message;

[0046] FIG. 11B depicts a detail flowchart of operation 2052 of FIG. 10C for receiving the transferred communication;

[0047] FIG. 12A depicts a detail flowchart of operation 2072 of FIG. 11A for using the received instant messaging invitation email message by the recipient;

[0048] FIG. 12B shows a refinement of the relationships involved with database 150 of FIG. 6 regarding references involved with it and its components; and

[0049] FIG. 13 depicts an application of the instant messaging system in a situation where different users prefer multiple languages.

#### DETAILED DESCRIPTION OF THE INVENTION

[0050] FIG. 1 depicts a system comprising a server 100 communicatively coupled to associated client computers used by users supporting email communications and web browser compliant communications to provide instant messaging between at least two of the users.

[0051] The server computer 110 delivers formatted web pages to the client computer providing an area for the user of the client computer to participate in an Instant Messaging session. Each Instant Messaging session has a universally unique identifier, which the server computer uses to identify and store individual Instant Messages.

[0052] Server 100 communicatively couples 224 to client computer 210 used by user 200 supporting email communications and web browser compliant communications. Similarly, server 100 communicatively couples 324 and 424 to client computers 310 and 410 user by users 300 and 400, respectively.

[0053] Server 100 includes server computer 110 accessibly coupled 122 to server memory 120. Server program system 1000 operates server 100 and is comprised of program steps residing in server memory 120.

[0054] Each client computer 210, 310, and 410, is accessibly coupled 222, 322 and 422 to a respective memory 220, 320, and 420. In certain embodiments of the invention, program system 2000 operates the associated client computer based upon the interaction of the user and communications with server 100.

[0055] Each user may employ at least one of acoustic and tactile input to the associated client computer in its use. The usage may vary. By way of example, user 200 may use 212 tactile input such as a keyboard and pointing device. User 300 may use 312 acoustic input exclusively. User 400 may use 412 a combination of acoustic and tactile input.

[0056] User presentation of instant messaging communication as well as alerts regarding instant messaging invitations may be presented in at least one of the following ways: visually, acoustically, and tactilely.

[0057] By way of example, the visual alert may include an icon presented on a view screen, or by turning on a light. The acoustic alert may emit at least one of the following: an alert sound or an alert audio message. A tactile alert may include raising or lowering a tactile output member, such as found on a Braille keyboard. Any of these alerts may include a representation of the first user, the time of receipt of the invitation, as well as other information which may be part of the invitation, such as the intended topic or agenda of the instant messaging session.

[0058] By way of example, the areas of a web page may be associated with distinct voices by which content presented in an area may be acoustically presented to the user. The acoustic presentation may follow the order of receipt of the transferred communication, or the user may specify that a priority scheme by which various transferring communications received within a period of time are ordered for presentation. The user may further specify that differing voices may be presented louder or softer. The user may silence a voice.

[0059] Note that the server 100 communicatively coupled to the associated client computer used by the user may further support a version of TCP-IP compliant protocols in communication with the user, for at least one of the users.

[0060] Server 100 communicatively coupled to the associated client computer used by the user may further support at least one of the following:

[0061] a version of Wireless Application Protocol (WAP) compliant protocols in communication with the user;

[0062] a version of Bluetooth compliant protocols in communication with the user;

[0063] a version of HTTP compliant protocols in communication with the user; and

[0064] a version of XML compliant protocols in communication with the user.

[0065] Instant messaging session 130 involves a universally unique identifier 132 and web page 140 based upon that universally unique identifier, initiated by a first user 134 involving at least one recipient 136 contacted by email through their email address. Each recipient 136 is sent an instant messaging invitation email message.

[0066] The first user 134 is a member of the audience collection 138. When and if a recipient 136 responds to the instant messaging invitation email message, it becomes a member of the audience collection 138.

[0067] When a communication 142 is received from a first member of the audience collection 138, a transferred communication 144 from the first member is sent to all audience collection members.

[0068] Upon receipt of communication 142, it may be processed to create the processed communication 142 from the first member, which is then sent to all audience collection members as the transferred communication 144.

[0069] FIG. 2A depicts a detail flowchart of server program system 1000 of FIG. 1 for supporting instant messaging between at least two of the users.

[0070] Arrow 1010 directs the flow of execution from starting operation 1000 to operation 1012. Operation 1012 performs creating an instant messaging session with a universally unique identifier initiated by a first of the users for recipients designated as at least one of the remaining of the users. Arrow 1014 directs execution from operation 1012 to operation 1016. Operation 1016 terminates the operations of this flowchart.

[0071] Arrow 101010 directs the flow of execution from starting operation 1000 to operation 101012. Operation 101012 performs providing the instant messaging session identified by the universally unique identifier as a formatted web page to each of the designated recipients and to the first user. Arrow 101014 directs execution from operation 101012 to operation 1016. Operation 1016 terminates the operations of this flowchart.

[0072] FIG. 2B depicts a detail flowchart of operation 1012 of FIG. 2A for creating the instant messaging session.

[0073] Arrow 1050 directs the flow of execution from starting operation 1012 to operation 1052. Operation 1052 performs receiving an instant messaging session request from the first user for recipients each designated by an associated email address for the at least one of the remaining users. Arrow 1054 directs execution from operation 1052 to operation 1056. Operation 1056 terminates the operations of this flowchart.

[0074] Arrow 1060 directs the flow of execution from starting operation 1012 to operation 1062. Operation 1062 performs assigning the universally unique identifier based upon the instant messaging session request. Arrow 1064

directs execution from operation 1062 to operation 1056. Operation 1056 terminates the operations of this flowchart.

[0075] Arrow 1070 directs the flow of execution from starting operation 1012 to operation 1072. Operation 1072 performs sending an instant messaging invitation email message to the associated email address designated for each of the recipients. Arrow 1074 directs execution from operation 1072 to operation 1056. Operation 1056 terminates the operations of this flowchart.

[0076] FIG. 3 depicts a detail flowchart of operation 1022 of FIG. 1 for providing the instant messaging session.

[0077] Arrow 1090 directs the flow of execution from starting operation 1022 to operation 1092. Operation 1092 performs creating the web page referenced based upon the universally unique identifier. Arrow 1094 directs execution from operation 1092 to operation 1096. Operation 1096 terminates the operations of this flowchart.

[0078] Arrow 1100 directs the flow of execution from starting operation 1022 to operation 1102. Operation 1102 performs providing the web page with an area associated with the first user for participation. Arrow 1104 directs execution from operation 1102 to operation 1096. Operation 1096 terminates the operations of this flowchart.

[0079] Arrow 1110 directs the flow of execution from starting operation 1022 to operation 1112. Operation 1112 performs providing the web page with another area associated with the recipient for participation upon response to the instant messaging invitation email message, for each of the recipients. Arrow 1114 directs execution from operation 1112 to operation 1096. Operation 1096 terminates the operations of this flowchart.

[0080] As used herein, an audience collection will include the first user and each of the recipients responding to the instant messaging invitation email message.

[0081] Arrow 1120 directs the flow of execution from starting operation 1022 to operation 1122. Operation 1122 performs transferring at least one received communication from the associated client computer operated by a first of the members of the audience collection to all of the members of the audience collection to create a transferred communication as content in the area associated with the first member. Arrow 1124 directs execution from operation 1122 to operation 1096. Operation 1096 terminates the operations of this flowchart.

[0082] FIG. 4A depicts a detail flowchart of operation 1122 of FIG. 3 for transferring the at least one received communication from the first member.

[0083] Arrow 1150 directs the flow of execution from starting operation 1122 to operation 1152. Operation 1152 performs receiving at least one communication from the first member of the audience collection to create at least one received communication. Arrow 1154 directs execution from operation 1152 to operation 1156. Operation 1156 terminates the operations of this flowchart.

[0084] Arrow 1160 directs the flow of execution from starting operation 1122 to operation 1162. Operation 1162 performs processing at least one received communication from the first member to create at least one processed communication from the first member. Arrow 1164 directs execution from operation 1162 to operation 1156. Operation 1156 terminates the operations of this flowchart.

[0085] Arrow 1170 directs the flow of execution from starting operation 1122 to operation 1172. Operation 1172 performs sending at least one processed communication

from the first member to create the transferred communication as content in the area associated with the first member to all audience collection members. Arrow 1174 directs execution from operation 1172 to operation 1156. Operation 1156 terminates the operations of this flowchart.

[0086] FIG. 4B depicts a detail flowchart of server program system 1000 of FIG. 1 for supporting instant messaging between at least two users.

[0087] Arrow 1190 directs the flow of execution from starting operation 1000 to operation 1192. Operation 1192 performs maintaining a database referencing a history of the instant messaging session with the universally unique identifier. Arrow 1194 directs execution from operation 1192 to operation 1196. Operation 1196 terminates the operations of this flowchart.

[0088] FIG. 5A depicts a detail flowchart of operation 1192 of FIG. 4B for maintaining the database referencing the history.

[0089] Arrow 1210 directs the flow of execution from starting operation 1192 to operation 1212. Operation 1212 performs maintaining the history of the instant messaging session with the universally unique identifier for the audience collection. Arrow 1214 directs execution from operation 1212 to operation 1216. Operation 1216 terminates the operations of this flowchart.

[0090] FIG. 5B depicts a detail flowchart of operation 1172 of FIG. 4A for sending at least one processed communication from the first member.

[0091] Arrow 1230 directs the flow of execution from starting operation 1172 to operation 1232. Operation 1232 performs sending the processed communication from the first member as content in the area associated with the first member to the history of the instant messaging session with the universally unique identifier. Arrow 1234 directs execution from operation 1232 to operation 1236. Operation 1236 terminates the operations of this flowchart.

[0092] FIG. 5C depicts a detail flowchart of operation 1212 of FIG. 5A for maintaining the history.

[0093] Arrow 1250 directs the flow of execution from starting operation 1212 to operation 1252. Operation 1252 performs receiving the transferred communication from the first member at the history to create a history-received communication from the first member. Arrow 1254 directs execution from operation 1252 to operation 1256. Operation 1256 terminates the operations of this flowchart.

[0094] FIG. 6 is a refinement of FIG. 1 showing server 100 coupled 102 to instant messaging session 130 and further coupled 104 to database 150.

[0095] Note that in certain embodiments of the invention, there is no database 150, when it is required that no lasting record of the instant messaging session is kept. Such embodiments enforce the instant messaging session confidentiality cannot be broken at a later time.

[0096] When there is a database 150, it references 152 history 154 of the instant messaging session 130. History 154 may reference 156 universally unique identifier 158, which is based upon universally unique identifier 132 of instant messaging session 130. Note that history 154 may persist after instant messaging session 130 has ended. In some circumstances, history 154 may be built from instant messaging session 130. Such a build process may occur when the session was initiated or later, possibly when the session ends.

[0097] History 154 may also reference 160 audience list 162 based upon audience collection 138.

[0098] History 154 may also reference 164 a communication history 166, which further references communications records 168, each of which may be based upon at least one of the received communication 142, processed communication 144, and transferred communication 146.

[0099] Depending upon the options the initial sender 134 setup when Instant Messaging session 130 was initiated, the server 100 may retain the complete transcript 166 of the Instant Messaging session.

[0100] This is a simple matter for server 100 to do, since each and every Instant Messaging 130 has a unique ID 132. Communication 142 between users 200, 300, and 400 must pass through the server 100 prior to delivery and is uniquely bound to its Instant Messaging session 130 via a unique ID 132.

[0101] This is a powerful feature, in that the URL contained in the email initiating the whole Instant Messaging session 130 always contains that unique ID 132. The user whenever looking at that email at any time in the future, will trigger the server 100 to attempt fetching all the Instant Messaging messages 168 has stored for that email. The email will then continue to display to the user the complete Instant Messaging transcript associated with the email.

[0102] FIG. 7A depicts a detail flowchart of operation 1262 of FIG. 5C for maintaining the communication history.

[0103] Arrow 1270 directs the flow of execution from starting operation 1262 to operation 1272. Operation 1272 performs creating a new communication record containing the first member history-received communication as the communication from the first member. Arrow 1274 directs execution from operation 1272 to operation 1276. Operation 1276 terminates the operations of this flowchart.

[0104] Arrow 1280 directs the flow of execution from starting operation 1262 to operation 1282. Operation 1282 performs adding the new communication record to the communication history. Arrow 1284 directs execution from operation 1282 to operation 1276. Operation 1276 terminates the operations of this flowchart.

[0105] FIG. 7B depicts a detail flowchart of operation 1272 of FIG. 7A for creating the instant messaging session with the universally unique identifier.

[0106] Arrow 1310 directs the flow of execution from starting operation 1272 to operation 1312. Operation 1312 performs sending the database an initiating request for the instant messaging session with the universally unique identifier by the first user for the recipients. Arrow 1314 directs execution from operation 1312 to operation 1316. Operation 1316 terminates the operations of this flowchart.

[0107] FIG. 7C depicts a detail flowchart of operation 1192 of FIG. 4B for maintaining the database.

[0108] Arrow 1330 directs the flow of execution from starting operation 1192 to operation 1332. Operation 1332 performs receiving the initiating request for the instant messaging session with the universally unique identifier by the first user for the recipients at the database. Arrow 1334 directs execution from operation 1332 to operation 1336. Operation 1336 terminates the operations of this flowchart.

[0109] Arrow 1340 directs the flow of execution from starting operation 1192 to operation 1342. Operation 1342 performs creating the history of the instant messaging session with the universally unique identifier from the initiating request for the instant messaging session with the univer-

sally unique identifier by the first user for the recipients. Arrow **1344** directs execution from operation **1342** to operation **1346**. Operation **1346** terminates the operations of this flowchart.

[0110] FIG. **8B** depicts a detail flowchart of operation **1342** of FIG. **8A** for creating the history.

[0111] Arrow **1370** directs the flow of execution from starting operation **1342** to operation **1372**. Operation **1372** performs creating an audience list containing references to each member of the audience collection. Arrow **1374** directs execution from operation **1372** to operation **1376**. Operation **1376** terminates the operations of this flowchart.

[0112] Arrow **1380** directs the flow of execution from starting operation **1342** to operation **1382**. Operation **1382** performs creating a first of the communication records in the communication history based upon the initiating request. Arrow **1384** directs execution from operation **1382** to operation **1376**. Operation **1376** terminates the operations of this flowchart.

[0113] Note that various embodiments of the invention may implement one or both of the operations of FIG. **8B**.

[0114] FIG. **9** depicts a detail flowchart of operation **1172** of FIG. **4A** for sending the instant messaging invitation email message to the associated email address designated for each of the recipients.

[0115] Arrow **1410** directs the flow of execution from starting operation **1172** to operation **1412**. Operation **1412** performs sending the instant messaging invitation email message containing a body further including the web page referenced by the universally unique identifier actively embedded in the body to the associated email address designated for at least one of the recipients. Arrow **1414** directs execution from operation **1412** to operation **1416**. Operation **1416** terminates the operations of this flowchart.

[0116] Arrow **1420** directs the flow of execution from starting operation **1172** to operation **1422**. Operation **1422** performs sending the instant messaging invitation email message containing a body further including a link to the web page referenced by a URL based upon the universally unique identifier to the associated email address designated for at least one of the recipients. Arrow **1424** directs execution from operation **1422** to operation **1416**. Operation **1416** terminates the operations of this flowchart.

[0117] Arrow **1430** directs the flow of execution from starting operation **1172** to operation **1432**. Operation **1432** performs sending the instant messaging invitation email message containing a body further including an icon referenced by the universally unique identifier to the associated email address designated for at least one of the recipients. Arrow **1434** directs execution from operation **1432** to operation **1416**. Operation **1416** terminates the operations of this flowchart.

[0118] Note that in various situations, a combination of the operations of FIG. **9** may be performed to send instant messaging invitations to a collection of recipients.

[0119] An email with an integrated Instant Message may be created in one of two methods:

[0120] The first method uses a web based email program including a typical email “body”, an area for users to Instant Message each other, and a unique identifier (ID) **132** appended to the URI of the email, and serves to differentiate this email (and potential Instant Messaging session) from all others.

[0121] The second method uses a supported 3rd-party client email program, such as Microsoft Outlook, Eudora and Netscape Communicator. Under this scenario an “Embeddable IM” icon may added to the email program’s toolbar, allowing users to drag the icon down and “drop” it into their email.

[0122] This invokes software embedding a URL to the Instant Messaging facility in the client’s email. This URL is based upon unique identifier **132**.

[0123] In either case, the URL which is generated, either for the web based email, or as an Instant Messaging URL inserted into a “standard” email, will be tagged with an ID **132** for the sender and with a flag indicating that it is an “email IM”. In this way the recipient is supported in Instant Messaging with the sender regardless of which users the sender has given “presence detection” permission to.

[0124] In any case, the sender’s email address must also be included as part of the email (or server form submission). This is so that when the recipient responds the response can be correctly routed to the sender. This can be viewed as a return address. The very first time that a user sends an IM-enriched email they may have to type in their email address, but after that the email address may preferably be stored in a cookie on their computer so that all subsequent Instant Messaging emails can automatically contain it.

[0125] When responding to IM-enriched emails, the recipient’s email address must be included with the IM, either in the URL or the Instant Messaging itself. This is the recipient’s return address and is required for the same reasons above. The return address will be obtained from the recipient as described above.

[0126] If an email is sent in the first method, the email body is sent by the client browser code up to the server computer **110**. Server computer **110** then may preferably store this email message in the server-side database **150**, allowing for future retrieval via URL.

[0127] When the recipient receives an email via either of the methods described above, it contains a standard email subject line and body, but may preferably contains a text area allowing the recipient to communicate with the sender.

[0128] If the recipient chooses not to communicate with the sender, no further action is taken, and the email may be handled/disposed of as the client user wishes.

[0129] If the recipient does choose to utilize the preferably built-in instant messaging feature, they simply input their message into the text area, and activate a Send button near the text area. This preferably causes client-side DHTML. (HTML and JavaScript) to be invoked sending the message, via HTTP, back to the server computer **110**.

[0130] Upon receiving this client request **1152**, the server preferably checks the database **150** to see if it recognizes any Instant Messaging sessions **130** with that particular ID **132**.

[0131] If it does, it preferably associates this message **142** with that unique ID, and stores it in the server-side database in some form **168**. This approach allows the system to operate on virtually any hardware platform, operate through firewalls, etc.

[0132] Normally, when an Instant Messaging is received **1152** by the server computer **110**, it compares the source of the email against the target user’s the Instant Messaging list of acceptable senders, and only delivers the Instant Messaging if the target user is willing to accept it.

[0133] The exception to occurs when an Instant Messaging comes in from an email source. The server computer **110**

knows that the message is coming from an email source, because when the Instant Messaging URL **140** was first generated for insertion into the email, the URL was tagged with an ID **132** for the sender and with a flag indicating that it is an “email IM”. In this case, the server **100** knows that the recipient is allowed to Instant Messaging with the sender regardless of which users the sender has given “presence detection” permission to. If the recipient does not have permission to detect the sender’s presence using standalone software, they would still not be able to do that. They would only be able to participate in instant Messaging with the sender within the context of this particular email message.

**[0134]** The ability to temporarily disable presence detection restrictions allows individuals like the sender to maintain a high degree of overall privacy without making it cumbersome to disable the privacy feature when having specific conversations with specific individuals. The procedure is not cumbersome because the act of sending the email automatically and implicitly grants the recipient Instant Messaging permissions in this particular case.

**[0135]** From the sender’s side, if the sender of the email is using the standalone web page version of the Instant Messaging software, that standalone client software is constantly (every few seconds) making HTTP requests to the server asking if any new data has arrived for it. The server makes a note of the last time the client made such a request of it. On one of these requests, after the server has received an Instant Messaging from the recipient and stored it in the database, the server computer responds to the sending client’s request with any newly received IMs. The server then marks those IMs in the database as “delivered”.

**[0136]** If the sender of the email does not have the standalone web page version of the Instant Messaging software running, then when the server gets the Instant Messaging from the email recipient, it notices that the email sender’s client software has not asked it for any messages in too long of a period of time (i.e. it has not been making requests every few seconds).

**[0137]** The server knows this since it keeps track of client data requests. In such a case, the server automatically composes an email and sends it to the Instant Messaging target user. The email contains the IM, as well as the standard Instant Messaging text area so that when the email is received, the Instant Messaging session may commence directly from the received email. Under this scenario, both client users are utilizing the software via email.

**[0138]** Following all of the above, the sender can Instant Messaging a response back to the recipient, and the same process takes place again, in reverse.

**[0139]** FIG. 10A depicts a detail flowchart of client program system **2000** of FIGS. 1 and 6 for controlling the associated client computer based upon the use by the user and the communicatively coupled server **100**.

**[0140]** Arrow **2010** directs the flow of execution from starting operation **2000** to operation **2012**. Operation **2012** performs providing support for email communication and for web browser compliant communication used by the user with the communicatively coupled server based upon at least one of tactile input from the user and acoustic input from the user. Arrow **2014** directs execution from operation **2012** to operation **2016**. Operation **2016** terminates the operations of this flowchart.

**[0141]** FIG. 10B depicts a detail flowchart of operation **2012** of FIG. 10A for support of email and web browser compliant communication.

**[0142]** Arrow **2030** directs the flow of execution from starting operation **2012** to operation **2032**. Operation **2032** performs sending the instant messaging session request initiated by the first user for the designated recipients to the communicatively coupled server. Arrow **2034** directs execution from operation **2032** to operation **2036**. Operation **2036** terminates the operations of this flowchart.

**[0143]** Arrow **2040** directs the flow of execution from starting operation **2012** to operation **2042**. Operation **2042** performs receiving the instant messaging invitation email message for the user as the recipient from the communicatively coupled server to create a received instant messaging invitation email message. Arrow **2044** directs execution from operation **2042** to operation **2036**. Operation **2036** terminates the operations of this flowchart.

**[0144]** Various embodiments of the invention may support one or both of the operations **2032** and **2042** operating the associated client computer used one of the users.

**[0145]** FIG. 10C depicts a detail flowchart of operation **2012** of FIG. 10A for providing support for email communication and for web browser compliant communication.

**[0146]** Arrow **2050** directs the flow of execution from starting operation **2012** to operation **2052**. Operation **2052** performs receiving the transferred communication from the first member to create a received-transferred communication from the first member. Arrow **2054** directs execution from operation **2052** to operation **2056**. Operation **2056** terminates the operations of this flowchart.

**[0147]** FIG. 11A depicts a detail flowchart of operation **2042** of FIG. 10B for receiving the instant messaging invitation email message.

**[0148]** Arrow **2070** directs the flow of execution from starting operation **2042** to operation **2072**. Operation **2072** performs using the received instant messaging invitation email message by the recipient to create an instant messaging response sent to the communicatively coupled server. Arrow **2074** directs execution from operation **2072** to operation **2076**. Operation **2076** terminates the operations of this flowchart.

**[0149]** Arrow **2080** directs the flow of execution from starting operation **2042** to operation **2082**. Operation **2082** performs alerting the recipient of the received instant messaging invitation email message employing at least one member of a user output collection including visual output, acoustic output and tactile output. Arrow **2084** directs execution from operation **2082** to operation **2086**. Operation **2086** terminates the operations of this flowchart.

**[0150]** FIG. 11B depicts a detail flowchart of operation **2052** of FIG. 10C for receiving the transferred communication.

**[0151]** Arrow **2090** directs the flow of execution from starting operation **2052** to operation **2092**. Operation **2092** performs presenting the received-transferred communication from the first member as content in the area associated with the first member. Arrow **2094** directs execution from operation **2092** to operation **2096**. Operation **2096** terminates the operations of this flowchart.

**[0152]** FIG. 12A depicts a detail flowchart of operation **2072** of FIG. 11A for using the received instant messaging invitation email message by the recipient.

[0153] Arrow 2110 directs the flow of execution from starting operation 2072 to operation 2112. Operation 2112 performs activating the embedded web page referenced by the universally unique identifier contained in the received instant messaging invitation email message by the recipient to create an instant messaging response sent to the communicatively coupled server. Arrow 2114 directs execution from operation 2112 to operation 2116. Operation 2116 terminates the operations of this flowchart.

[0154] Arrow 2120 directs the flow of execution from starting operation 2072 to operation 2122. Operation 2122 performs activating the link to the web page referenced by the URL based upon the universally unique identifier contained in the received instant messaging invitation email message by the recipient to create an instant messaging response sent to the communicatively coupled server. Arrow 2124 directs execution from operation 2122 to operation 2116. Operation 2116 terminates the operations of this flowchart.

[0155] Arrow 2130 directs the flow of execution from starting operation 2072 to operation 2132. Operation 2132 performs activating the icon referenced by the universally unique identifier contained in the received instant messaging invitation email message by the recipient to create an instant messaging response sent to the communicatively coupled server. Arrow 2134 directs execution from operation 2132 to operation 2116. Operation 2116 terminates the operations of this flowchart.

[0156] FIG. 12B shows a refinement of the relationships involved with database 150 of FIG. 6 regarding references involved with it and its components.

[0157] In certain embodiments of the invention, database 150 may contain history 154 of the instant messaging session 130.

[0158] History 154 may contain the referenced universally unique identifier 158 based upon universally unique identifier 132 of instant messaging session 130.

[0159] History 154 may contain referenced audience list 162 based upon audience collection 138.

[0160] History 154 may also contain the referenced communication history 166, which further contain the referenced communications records 168, each of which may be based upon at least one of the received communication 142, processed communication 144, and transferred communication 144.

[0161] Note that for the sake of simplicity of discourse, these references are all shown individually as container relationships, though in practice any combination of them may be container relationships. Note that in other embodiments, these referenced relationships may be part of an inferential database 150, where the relationships are of an implicative rather than container basis.

[0162] FIG. 13 depicts an application of the instant messaging system in a situation where different users prefer multiple languages.

[0163] Note that in certain embodiments of the invention, at least two members of the audience collection may have at least one associated language. Collectively, the communications between members of the audience collection may require more than one language.

[0164] As an example, assume that user1 200 prefers language 230, user2 300 prefers language 330 and user3 400 prefers language 430, which are different. These distinct languages may be differing versions of the same basic

human language, or may differ in terms of the basic human languages. Note that as used herein, a basic language such as English may have several versions, such as US, UK and Australian English.

[0165] Note that the received communication 142 may be in first language 230, and that the processed communication 144 may be in at least a second language 330. The processed communication may be more than one language, by way of example, a third language 430.

[0166] Note that the transferred communication 146 would involve all the languages preferred by the audience collection members.

[0167] The preceding embodiments have been provided by way of example and are not meant to constrain the scope of the following claims.

1. A system supporting instant messaging between at least two users comprising:

a server communicatively coupled to an associated client computer used by said user supporting email communications and supporting web browser compliant communications, for each of said users;

wherein said server is comprised of at least one server computer accessibly coupled with a memory;

wherein said server is operated by a server program system comprised of program steps residing in said memory and executed by said server computer;

wherein said server program system is further comprised of the program steps of:

creating an instant messaging session with a universally unique identifier initiated by a first of said users for recipients designated as at least one of the remaining of said users; and

providing said instant messaging session identified by said universally unique identifier as a formatted web page to each of said designated recipients and to said first user;

wherein the program step creating said instant messaging session further comprising the program steps of:

receiving an instant messaging session request from said first user for recipients each designated by an associated email address for said at least one of said remaining users;

assigning said universally unique identifier based upon said instant messaging session request; and

sending an instant messaging invitation email message to said associated email address designated for each of said recipients;

wherein the program step providing said instant messaging session is further comprised of the program steps of:

creating said web page referenced based upon said universally unique identifier;

providing said web page with an area associated with said first user for participation;

providing said web page with another area associated with said recipient for participation upon response to said instant messaging invitation email message, for each of said recipients; wherein an audience collection is comprised of said first user and each of said recipients responding to said instant messaging invitation email message; and

transferring at least one received communication from said associated client computer operated by a first of said members of said audience collection to all of said

members of said audience collection to create a transferred communication as content in said area associated with said first member;

wherein the program step transferring said at least one received communication from said first member is further comprised of the program steps of:

receiving at least one communication from said first member of said audience collection to create said at least one received communication;

processing said at least one received communication from said first member to create at least one processed communication from said first member; and

sending said at least one processed communication from said first member to create said transferred communication as content in said area associated with said first member to all members of said audience collection; wherein said server program system is further comprised of the program step of:

maintaining a database referencing a history of said instant messaging session with said universally unique identifier further comprising the program step of maintaining said history of said instant messaging session with said universally unique identifier for said audience collection;

wherein the program step sending said at least one processed communication from said first member is further comprised of the program step of:

sending said processed communication from said first member as content in said area associated with said first member to said history of said instant messaging session with said universally unique identifier;

wherein the program step maintaining said history is further comprised of the program steps of:

receiving said transferred communication from said first member at said history to create a history-received communication from said first member; and

maintaining a communication history comprising a collection of at least one communication record;

wherein each of said communication records is based upon at least one member of the collection comprising said received communication, said processed communication, and said transferred communication;

wherein the program step maintaining said communication history is further comprised of the program steps of:

creating a new communication record containing said first member history-received communication as said communication from said first member; and

adding said new communication record to said communication history.

## 2. The system of claim 1,

wherein the program step creating said instant messaging session with said universally unique identifier is further comprised of the program step of:

sending said database an initiating request for said instant messaging session with said universally unique identifier by said first user for said recipients;

wherein the program step maintaining said database is further comprised of the program step of:

receiving said initiating request for said instant messaging session with said universally unique identifier by said first user for said recipients at said database; and

creating said history of said instant messaging session with said universally unique identifier from said initi-

ating request for said instant messaging session with said universally unique identifier by said first user for said recipients.

## 3. The system of claim 2,

wherein the program step creating said history is further comprised of at least one member of the collection comprising the program steps of:

creating an audience list containing references to each member of said audience collection; and

creating a first of said communication records in said communication history based upon said initiating request.

## 4. The system of claim 1,

wherein the program step sending said instant messaging invitation email message to said associated email address designated for each of said recipients is further comprised of at least one member of the collection comprising the program steps of:

sending said instant messaging invitation email message containing a body further including said web page referenced by said universally unique identifier actively embedded in said body to said associated email address designated for at least one of said recipients;

sending said instant messaging invitation email message containing a body further including a link to said web page referenced by a URL based upon said universally unique identifier to said associated email address designated for at least one of said recipients; and

sending said instant messaging invitation email message containing a body further including an icon referenced by said universally unique identifier to said associated email address designated for at least one of said recipients.

## 5. The system of claim 4,

wherein said associated client computer used by said user, for at least one of said users, comprised of:

a client memory accessibly coupled with said associated client computer; and

a client program system comprised of program steps residing in said accessibly coupled client memory;

wherein said associated client computer is controlled by said client program system based upon use by said user and based upon said communicatively coupled said server;

wherein the program step providing support for email communication and for web browser compliant communication is further comprised of the program steps:

providing support for email communication and for web browser compliant communication used by said user with said communicatively coupled server based upon at least one member of the collection comprising tactile input from said user and acoustic input from said user further comprised of at least one member of the collection comprising the program steps of:

sending said instant messaging session request initiated by said first user for said designated recipients to said communicatively coupled server; and

receiving said instant messaging invitation email message for said user as said recipient from said communicatively coupled server to create a received instant messaging invitation email message;

wherein said client program system is further comprised of the program step of:

receiving said transferred communication from said first member to create a received-transferred communication from said first member;

wherein the program step receiving said instant messaging invitation email message further comprising at least one member of the collection comprising the program steps of:

alerting said recipient of said received instant messaging invitation email message employing at least one member of a user output collection including visual output, acoustic output and tactile output; and

using said received instant messaging invitation email message by said recipient to create an instant messaging response sent to said communicatively coupled server;

wherein the program step receiving said transferred communication is further comprised of the program step of: presenting said received-transferred communication from said first member as content in said area associated with said first member.

**6.** The system of claim **5**,

wherein the program step using said received instant messaging invitation email message by said recipient is further comprised of at least one member of the collection comprising the program steps of:

activating said embedded web page referenced by said universally unique identifier contained in said received instant messaging invitation email message by said recipient to create an instant messaging response sent to said communicatively coupled server;

activating said link to said web page referenced by said URL based upon said universally unique identifier contained in said received instant messaging invitation email message by said recipient to create an instant messaging response sent to said communicatively coupled server; and

activating said icon referenced by said universally unique identifier contained in said received instant messaging invitation email message by said recipient to create an instant messaging response sent to said communicatively coupled server.

**7.** The system of claim **3**,

wherein said history contains said audience list.

**8.** The system of claim **1**,

wherein said history contains said communication history.

**9.** The system of claim **1**,

wherein said database contains said history.

**10.** The system of claim **1**,

wherein said at least one received communication is in a first language; and

wherein said at least one processed communication is in at least a second language.

**11.** The system of claim **10**,

wherein said at least one processed communication is in at least said second language and a third language.

**12.** The system of claim **11**,

wherein a language collection includes at least a version of English, a version of French, a version of German, a version of Spanish, a version of Swahili, a version of Arabic, a version of Japanese, a version of a Chinese language, a version of Korean, and a version of Hindi;

wherein a user language collection includes said first language and said second language and said third language;

wherein at least one member of said user language collection is a member of said language collection.

**13.** The system of claim **1**,

wherein said associated client computer used by said user, for at least one of said users, comprised of:

a client memory accessibly coupled with said associated client computer; and

a client program system comprised of program steps residing in said accessibly coupled client memory;

wherein said associated client computer is controlled by said client program system based upon use by said user and based upon said communicatively coupled said server;

wherein said client program system is further comprised of the program step of:

providing support for email communication and for web browser compliant communication used by said user with said communicatively coupled server based upon at least one member of the collection comprising tactile input from said user and acoustic input from said user further comprised of at least one member of the collection comprising the program steps of:

sending said instant messaging session request initiated by said first user for said recipients designated as at least one of said remaining users to said communicatively coupled server; and

receiving said instant messaging invitation email message for said user as said recipient from said communicatively coupled server to create a received instant messaging invitation email message;

wherein the program step providing support for email communication and for web browser compliant communication is further comprised of the program step of:

receiving said transferred communication from said first member to create a received-transferred communication from said first member;

wherein the program step receiving said instant messaging invitation email message further comprising at least one member of the collection comprising the program steps of:

alerting said recipient of said received instant messaging invitation email message employing at least one member of a user output collection including visual output, acoustic output and tactile output; and

using said received instant messaging invitation email message by said recipient to create an instant messaging response sent to said communicatively coupled server;

wherein the program step receiving said transferred communication is further comprised of the program step of:

presenting said received-transferred communication from said first member as content in said area associated with said first member.

**14.** The system of claim **1**,

wherein said server communicatively coupled to said associated client computer used by said user further supports a version of TCP-IP compliant protocols in communication with said user, for at least one of said users.

**15.** The system of claim **14**,

wherein said server communicatively coupled to said associated client computer used by said user further supports at least one member of the collection comprising:



a version of Wireless Application Protocol (WAP) compliant protocols in communication with said user;  
 a version of Bluetooth compliant protocols in communication with said user;  
 a version of HTTP compliant protocols in communication with said user; and  
 a version of XML compliant protocols in communication with said user.

**16.** A method supporting instant messaging between at least two users and a server communicatively coupled to said user supporting email communications and supporting web browser compliant communications, for each of said users comprising the steps of:

creating an instant messaging session with a universally unique identifier initiated by a first of said users for recipients designated as at least one of the remaining of said users; and

providing said instant messaging session identified by said universally unique identifier as a formatted web page to each of said designated recipients and to said first user;

wherein the step creating said instant messaging session further comprising the steps of:

receiving an instant messaging session request from said first user for recipients each designated by an associated email address for said at least one of said remaining users;

assigning said universally unique identifier based upon said instant messaging session request; and

sending an instant messaging invitation email message to said associated email address designated for each of said recipients;

wherein the step providing said instant messaging session is further comprised of the steps of:

creating said web page referenced based upon said universally unique identifier;

providing said web page with an area associated with said first user for participation;

providing said web page with another area associated with said recipient for participation upon response to said instant messaging invitation email message, for each of said recipients; wherein an audience collection is comprised of said first user and each of said recipients responding to said instant messaging invitation email message; and

transferring at least one received communication from said associated client computer operated by a first of said members of said audience collection to all of said members of said audience collection to create a transferred communication as content in said area associated with said first member;

wherein the step transferring said at least one received communication from said first member is further comprised of the steps of:

receiving at least one communication from said first member of said audience collection to create said at least one received communication;

processing said at least one received communication from said first member to create at least one processed communication from said first member; and

sending said at least one processed communication from said first member to create said transferred communication as content in said area associated with said first member to all members of said audience collection;

maintaining a database referencing a history of said instant messaging session with said universally unique identifier further comprising the step of maintaining said history of said instant messaging session with said universally unique identifier for said audience collection;

wherein the step sending said at least one processed communication from said first member is further comprised of the step of:

sending said processed communication from said first member as content in said area associated with said first member to said history of said instant messaging session with said universally unique identifier;

wherein the step maintaining said history is further comprised of the steps of:

receiving said transferred communication from said first member at said history to create a history-received communication from said first member; and maintaining a communication history comprising a collection of at least one communication record;

wherein each of said communication records is based upon at least one member of the collection comprising said received communication, said processed communication, and said transferred communication;

wherein the step maintaining said communication history is further comprised of the steps of:

creating a new communication record containing said first member history-received communication as said communication from said first member; and

adding said new communication record to said communication history.

**17.** The method of claim **16**,

wherein the step creating said instant messaging session with said universally unique identifier is further comprised of the step of:

sending said database an initiating request for said instant messaging session with said universally unique identifier by said first user for said recipients;

wherein the step maintaining said database is further comprised of the step of:

receiving said initiating request for said instant messaging session with said universally unique identifier by said first user for said recipients at said database; and

creating said history of said instant messaging session with said universally unique identifier from said initiating request for said instant messaging session with said universally unique identifier by said first user for said recipients.

**18.** The method of claim **17**,

wherein the step creating said history is further comprised of at least one member of the collection comprising the steps of:

creating an audience list containing references to each member of said audience collection; and

creating a first of said communication records in said communication history based upon said initiating request.

**19.** The method of claim **16**,

wherein the step sending said instant messaging invitation email message to said associated email address designated for each of said recipients is further comprised of at least one member of the collection comprising the steps of;

sending said instant messaging invitation email message containing a body further including said web page referenced by said universally unique identifier actively embedded in said body to said associated email address designated for at least one of said recipients;

sending said instant messaging invitation email message containing a body further including a link to said web page referenced by a URL based upon said universally unique identifier to said associated email address designated for at least one of said recipients; and

sending said instant messaging invitation email message containing a body further including an icon referenced by said universally unique identifier to said associated email address designated for at least one of said recipients.

**20.** The method of claim **19**, for at least one of said users, further comprising the step of:

providing support for email communication and for web browser compliant communication used by said user with said communicatively coupled server based upon at least one member of the collection comprising tactile input from said user and acoustic input from said user further comprised of at least one member of the collection comprising the steps of:

sending said instant messaging session request initiated by said first user for said designated recipients to said communicatively coupled server; and

receiving said instant messaging invitation email message for said user as said recipient from said communicatively coupled server to create a received instant messaging invitation email message;

wherein the step providing support for email communication and for web browser compliant communication is further comprised of the step of:

receiving said transferred communication from said first member to create a received-transferred communication from said first member;

wherein the step receiving said instant messaging invitation email message further comprising at least one member of the collection comprising the steps of:

alerting said recipient of said received instant messaging invitation email message employing at least one member of a user output collection including visual output, acoustic output and tactile output; and

using said received instant messaging invitation email message by said recipient to create an instant messaging response sent to said communicatively coupled server;

wherein the step receiving said transferred communication is further comprised of the step of:

presenting said received-transferred communication from said first member as content in said area associated with said first member.

\* \* \* \* \*